

# *Examination Results Statistics 2010*



Published by Student Statistics,  
Planning and Resource Allocation Office

*For internal use only*



# University Examinations 2010: Contents

	<i>Table</i>	<i>Page</i>
Notes on statistical tables		3
Honours examination results 1960–2010	1a	5
Graph of honours examination results 1960–2010	1b	7
 <b>Section A: University tables (white paper)</b>		
<b>University tables – Tripos examinations</b>		
All candidates	2a	9
Men/Women split	2b	13
<b>University tables – Preliminary and other examinations</b>		
All candidates	3a	17
Men/Women split	3b	19
<b>University tables – All examinations</b>		
All candidates	4a	21
Men/Women split	4b	23
<b>University tables – All candidates</b>		
All undergraduate examinations by ethnic background	5a	25
All undergraduate examinations by ethnic background, 2009 entrants	5b	27
All undergraduate examinations by ethnic background, 2008 entrants	5c	29
All undergraduate examinations by ethnic background, 2007 entrants	5d	31
All undergraduate examinations by ethnic background, 2006 entrants	5e	33
All undergraduate examinations by disability	10a	35
All undergraduate examinations by disability, 2009 entrants	10b	37
All undergraduate examinations by disability, 2008 entrants	10c	39
All undergraduate examinations by disability, 2007 entrants	10d	41
All undergraduate examinations by disability, 2006 entrants	10e	43
<b>University tables – Final Medical and Veterinary examinations</b>	11	45
<b>University tables – Students deemed to have obtained honours whilst studying abroad</b>	12	47
 <b>Section B: College tables (green paper)</b>		
<b>College tables – Tripos examinations</b>		
All candidates	6a	49
Men/Women split	6b	51
<b>College tables – Preliminary examinations</b>		
All candidates	7a	53
Men/Women split	7b	55
<b>College tables – All examinations</b>		
All candidates	8a	57
Men/Women split	8b	59
<b>College tables – Unclassified preliminary examinations</b>	9a	61



# University Examinations 2010

## Notes on statistical tables

1. Subject to the exceptions listed below, the statistics include all candidates for Tripos and Preliminary examinations whether undergraduates, affiliated students or graduates. The tables are compiled in July and do not reflect any amendments to the results made at a later date.
  
2. The statistics exclude:
  - a) candidates who took examinations as candidates 'not for honours' (with the exception of Part III of the Mathematical Tripos)
  - b) candidates for: (i) Diploma and Certificate examinations; (ii) Oral examinations in Modern Languages; and (iii) Mus.B. examination
  - c) unclassified preliminary examinations (in History, Classics and Education) and the First Examination for the Degree of Bachelor of Theology for Ministry. These results are shown separately in Table 9a so that they shall not affect percentages in the main tables.
  - d) the results for students who have spent the year studying abroad at the Massachusetts Institute of Technology or studying in Paris as part of the Double Maîtrise. These results are shown separately in Table 12 so that they shall not affect the percentages in the main tables.
  - e) candidates for the Final M.B. and Final Vet. M.B. examinations. These results are shown separately in Table 11, so as not to affect the percentages in the main tables.
  - f) candidates who were not classed and were still awaiting a decision from the Applications Committee at the time these tables were produced.
  
3. The heading 'Other results' includes (but does not differentiate between):
  - a) candidates who failed their examinations
  - b) Honours candidates who have received an allowance from the Examiners
  - c) candidates who have received allowances (deemed to have deserved honours (DDH) or granted an allowance towards the Ordinary degree) by the Applications Committee of the Council. (Allowances may be granted to candidates who have been ill or who have extenuating circumstances and have thus been prevented from taking an examination or whose performance has been adversely affected as a consequence.)
  
4. In Part III of the Mathematical Tripos, a pass with distinction or merit has been counted for statistical purposes as Class I, and a pass as Class II division (1). This applies whether or not the candidate is a candidate for honours.
  
5. In Part II of the Manufacturing Engineering Tripos and Part IIB of the Engineering Tripos, a pass with distinction has been counted for statistical purposes as Class I, a pass with merit as Class II division (1), and a pass as Class II division (2).
  
6. The class obtained in each language by candidates for Part IA of the Modern and Medieval Languages Tripos has been counted as half a class. This explains why, in some years, the number of candidates under each class division for this Tripos and in the totals are not whole units.

*(continued...)*

7. Third-year pre-clinical medical and veterinary students are included under the Tripos examination for which they were entered.
8. The following courses are in a state of transition, and Tripos results will be shown under two headings: Education Studies to Education; Oriental Studies to Asian and Middle Eastern Studies; and Social and Political Sciences to Politics, Psychology, and Sociology.
9. Tables providing disability information (10a–10e) have been revised since 2006. The category 'No known disability' has been replaced by 'No disability', leading to a significant shift from this category to 'Not known'.

**Please note that these statistics are provided for internal purposes only. Information relating to specific colleges will not be released without their consent, unless there is a legal requirement to do so. Tables giving figures for the whole University will be published in the 'Student Numbers' special edition of the *Cambridge University Reporter*, and may then be released outside the University with suitable acknowledgement.**

**Student Statistics Office  
Planning and Resource Allocation Office  
Greenwich House  
Madingley Rise  
Madingley Road  
Cambridge  
CB3 0TX**

**Email: [student.statistics@admin.cam.ac.uk](mailto:student.statistics@admin.cam.ac.uk)  
Telephone: (7)60181**

**July 2010**

## Honours examination results 1960–2010

	Class I		Class II Division (1)		Class II Undivided		Class II Division (2)		Class III		Other results		Total candidates	
	No.	%	No.	%	No.	%	No.	%	No.	%	No.	%	No.	No.
1960	444.5	10.3	1,036.5	24.1	173.0	4.0	1,524.5	35.5	949.5	22.1	172.0	4.0	4,300	
1961	453.5	10.5	1,060.0	24.5	185.0	4.3	1,552.5	35.9	907.0	20.9	172.0	4.0	4,330	
1962	424.5	9.8	1,029.5	23.7	181.0	4.2	1,563.0	36.0	903.0	20.8	238.0	5.5	4,339	
1963	459.0	10.6	1,076.5	24.8	154.0	3.6	1,544.5	35.7	896.0	20.7	202.0	4.7	4,332	
1964	496.5	11.2	1,099.0	24.9	159.0	3.6	1,585.0	35.9	904.5	20.5	177.0	4.0	4,421	
1965	529.0	11.6	1,238.5	27.2	180.0	3.9	1,597.5	35.0	821.0	18.0	194.0	4.3	4,560	
1966	646.5	11.3	1,275.0	22.2	717.0	12.5	1,755.5	30.6	1,151.0	20.0	198.0	3.4	5,743	
1967	730.5	12.2	1,399.0	23.3	616.0	10.3	1,941.0	32.3	1,038.0	17.3	283.5	4.7	6,008	
1968	730.5	12.2	1,369.0	22.9	628.0	10.5	1,954.5	32.7	1,086.0	18.2	214.0	3.6	5,982	
1969	746.5	12.3	1,532.0	25.3	646.0	10.7	1,951.5	32.2	962.0	15.9	215.0	3.6	6,053	
1970	775.5	12.6	1,666.5	27.0	578.0	9.4	1,913.5	31.0	1,000.5	16.2	242.0	3.9	6,176	
1971	806.0	12.6	1,668.5	26.2	703.0	11.0	2,041.0	32.0	918.5	14.4	240.0	3.8	6,377	
1972	821.5	13.2	1,701.5	27.3	633.0	10.1	1,996.0	32.0	953.0	15.3	134.0	2.1	6,239	
1973	824.0	12.8	1,739.0	26.9	682.0	10.6	2,144.5	33.2	919.5	14.2	145.0	2.2	6,454	
1974	818.0	12.4	1,696.5	25.7	1,010.0	15.3	1,993.5	30.2	917.5	13.9	158.5	2.4	6,594	
1975	831.0	12.5	2,039.0	30.6	643.0	9.6	2,176.0	32.6	802.0	12.0	174.0	2.6	6,665	
1976	866.0	13.1	1,935.0	29.3	656.0	9.9	2,185.0	33.1	808.5	12.2	151.5	2.3	6,602	
1977	917.0	13.1	2,134.0	30.5	697.0	10.0	2,317.0	33.1	804.0	11.5	123.0	1.8	6,992	
1978	918.0	13.1	2,201.0	31.5	667.0	9.5	2,288.5	32.8	778.0	11.1	134.5	1.9	6,987	
1979	943.0	12.9	2,295.0	31.5	676.0	9.3	2,385.5	32.7	855.0	11.7	135.5	1.9	7,290	
1980	1,002.5	13.1	2,461.5	32.1	676.0	8.8	2,532.0	33.1	878.5	11.5	110.5	1.4	7,661	
1981	1,002.5	12.9	2,513.5	32.4	705.0	9.1	2,544.5	32.8	891.0	11.5	101.5	1.3	7,758	
1982	998.5	12.5	2,664.0	33.3	715.0	8.9	2,597.0	32.5	891.5	11.2	128.0	1.6	7,994	
1983	1,029.5	12.9	2,809.0	35.1	737.0	9.2	2,477.5	30.9	839.5	10.5	117.5	1.5	8,010	
1984	1,022.0	12.8	2,834.5	35.6	704.0	8.8	2,469.5	31.0	813.5	10.2	127.5	1.6	7,971	
1985	1,090.0	13.8	2,801.0	35.5	752.0	9.5	2,399.0	30.4	733.5	9.3	108.5	1.4	7,884	
1986	1,136.0	14.2	2,894.0	36.1	781.0	9.7	2,419.0	30.1	672.5	8.4	124.5	1.6	8,027	
1987	1,206.5	14.9	3,107.5	38.4	749.0	9.3	2,303.5	28.5	617.0	7.6	109.5	1.4	8,093	
1988	1,199.0	14.7	3,067.0	37.7	699.0	8.6	2,425.5	29.8	627.0	7.7	117.5	1.4	8,135	
1989	1,304.5	15.7	3,345.0	40.3	704.0	8.5	2,337.5	28.1	532.0	6.4	86.0	1.0	8,309	
1990	1,366.0	16.2	3,450.5	41.0	715.0	8.5	2,227.0	26.5	545.5	6.5	104.0	1.2	8,408	
1991	1,400.5	16.5	3,481.0	41.1	743.0	8.8	2,237.5	26.4	502.0	5.9	104.0	1.2	8,468	
1992	1,460.0	16.9	3,616.5	41.9	729.0	8.5	2,206.5	25.6	486.0	5.6	129.0	1.5	8,627	

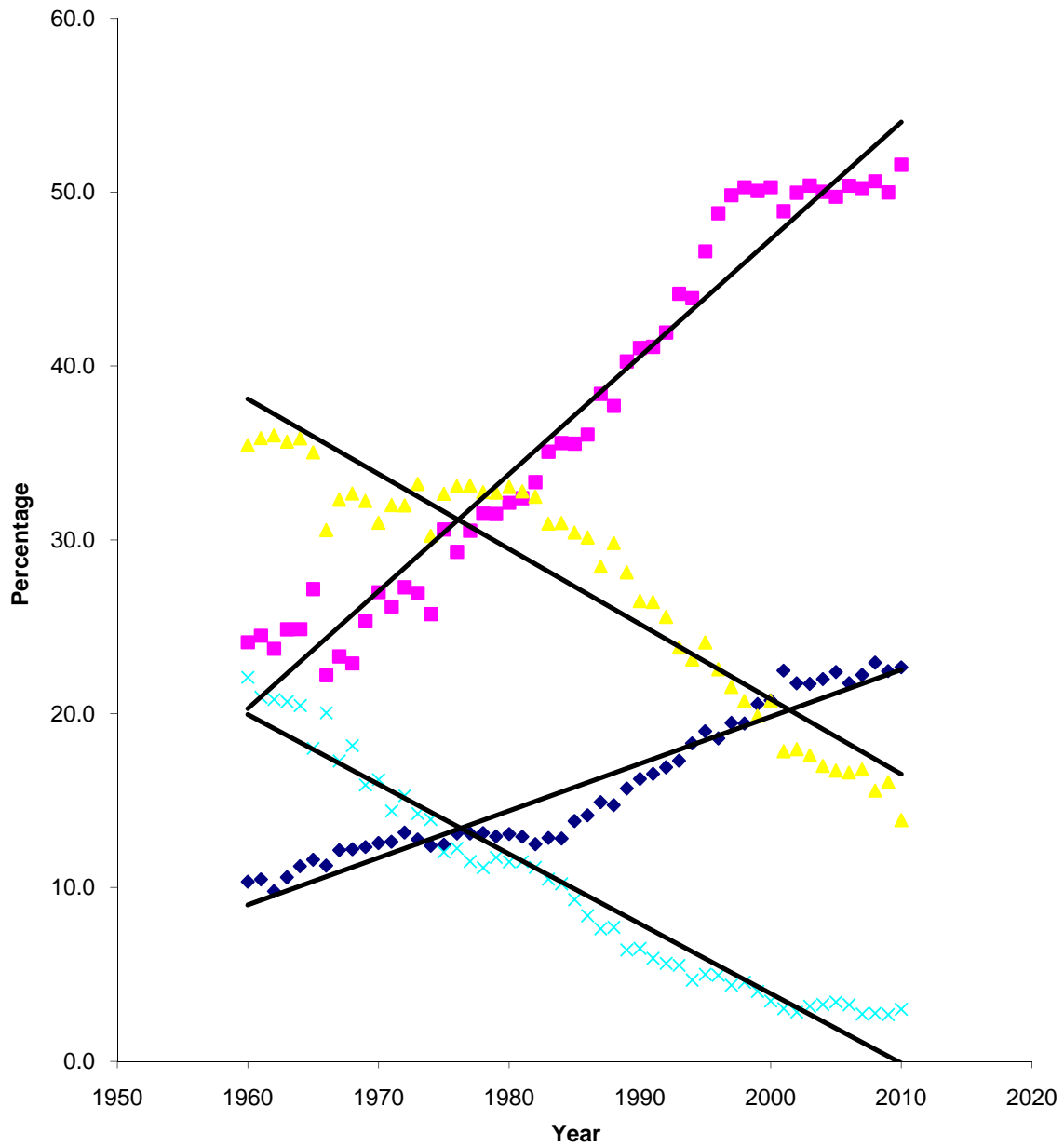
	Class I		Class II Division (1)		Class II Undivided		Class II Division (2)		Class III		Other results		Total candidates	
	No.	%	No.	%	No.	%	No.	%	No.	%	No.	%	No.	%
1993	1,497.5	17.3	3,822.5	44.2	705.0	8.1	2,061.0	23.8	478.0	5.5	92.0	1.1	8,656	
1994	1,594.5	18.3	3,825.5	43.9	774.0	8.9	2,015.0	23.1	407.0	4.7	98.0	1.1	8,714	
1995	1,667.0	19.0	4,103.5	46.6	359.0	4.1	2,138.0	24.1	440.0	5.0	90.5	1.0	8,808	
1996	1,684.0	18.6	4,420.0	48.8	356.0	3.9	2,043.5	22.6	448.0	4.9	108.5	1.2	9,060	
1997	1,771.0	19.5	4,529.5	49.8	328.0	3.6	1,958.0	21.5	398.5	4.4	107.0	1.2	9,092	
1998	1,798.5	19.4	4,650.5	50.3	366.0	4.0	1,917.0	20.7	420.5	4.5	96.5	1.0	9,249	
1999	1,901.0	20.5	4,632.0	50.1	410.0	4.4	1,838.5	19.9	371.5	4.0	98.0	1.1	9,251	
2000	1,946.0	20.8	4,711.5	50.3	378.0	4.0	1,944.0	20.7	325.5	3.5	65.0	0.7	9,370	
2001	2,106.5	22.5	4,582.0	48.9	629.0	6.7	1,671.5	17.8	283.0	3.0	97.0	1.0	9,369	
2002	2,108.0	21.8	4,841.0	50.0	650.0	6.7	1,740.0	18.0	274.0	2.8	76.0	0.8	9,689	
2003	2,176.0	21.7	5,046.0	50.4	639.0	6.4	1,762.5	17.6	316.5	3.2	76.0	0.8	10,016	
2004	2,215.5	22.0	5,039.0	50.0	685.0	6.8	1,711.0	17.0	329.5	3.3	94.0	0.9	10,074	
2005	2,261.0	22.4	5,019.5	49.7	655.0	6.5	1,688.0	16.7	344.5	3.4	124.0	1.2	10,092	
2006	2,179.0	21.8	5,046.0	50.4	682.0	6.8	1,664.0	16.6	326.0	3.3	121.0	1.2	10,018	
2007	2,213.0	22.2	4,998.0	50.2	698.0	7.0	1,671.0	16.8	270.0	2.7	100.0	1.0	9,950	
2008	2,298.5	22.9	5,072.5	50.6	720.0	7.2	1,560.5	15.6	276.5	2.8	91.0	0.9	10,019	
2009	2,288.5	22.5	5,095.0	50.0	787.0	7.7	1,637.0	16.1	274.0	2.7	112.0	1.1	10,193.5	
2010	2,357.0	22.7	5,361.5	51.6	799.0	7.7	1,442.0	13.9	311.5	3.0	125.0	1.2	10,396	

Notes: Candidates who were taking examinations as candidates 'not for honours' and candidates receiving allowances from the Applications Committee of the Council of the Senate were excluded from the 1972 statistics (and thereafter) although they had been included in previous years. Candidates receiving allowances from the Applications Committee have been reintroduced to the table from 2008. Candidates for the LL.B. Examination were included in 1972 for the first time but the LL.M. Examination was excluded from 1999. Candidates for the B.Ed. degree were excluded from the statistics for the years 1972-79 inclusive, but, with the introduction of the Education Tripos, are included from 1980.



### Honours Examination Results 1960-2010 The graph shows best fit line for each classification

◆ Class I      ■ Class II(1)      ▲ Class II(2)      × Class III



N.B. The above graph does not include Others and Class II (Undivided).



## Tripos examination results, 2010

	Class I		Class II Division (1)		Class II Undivided		Class II Division (2)		Class III		Other results		Total candidates		
	No.	%	No.	%	No.	%	No.	%	No.	%	No.	%	No.	%	
Anglo-Saxon, Norse, and Celtic Tripos, Part I	2	10.0%	15	75.0%	0	0.0%	3	15.0%	0	0.0%	0	0.0%	0	0.0%	20
Anglo-Saxon, Norse, and Celtic Tripos, Part II	5	19.2%	21	80.8%	0	0.0%	0	0.0%	0	0.0%	0	0.0%	0	0.0%	26
Archaeological and Anthropological Tripos, Part I	19	26.0%	48	65.8%	0	0.0%	6	8.2%	0	0.0%	0	0.0%	0	0.0%	73
Archaeological and Anthropological Tripos, Part IIA: Archaeology	3	14.3%	17	81.0%	0	0.0%	0	0.0%	1	4.8%	0	0.0%	0	0.0%	21
Archaeological and Anthropological Tripos, Part IIA: Biological Anthropology	3	13.0%	19	82.6%	0	0.0%	0	0.0%	0	0.0%	1	4.3%	0	0.0%	23
Archaeological and Anthropological Tripos, Part IIA: Social Anthropology	4	11.4%	28	80.0%	0	0.0%	2	5.7%	1	2.9%	0	0.0%	0	0.0%	35
Archaeological and Anthropological Tripos, Part IIB: Archaeology	8	44.4%	10	55.6%	0	0.0%	0	0.0%	0	0.0%	0	0.0%	0	0.0%	18
Archaeological and Anthropological Tripos, Part IIB: Biological Anthropology	8	29.6%	15	55.6%	0	0.0%	4	14.8%	0	0.0%	0	0.0%	0	0.0%	27
Archaeological and Anthropological Tripos, Part IIB: Social Anthropology	6	17.6%	25	73.5%	0	0.0%	2	5.9%	0	0.0%	1	2.9%	0	0.0%	34
Architecture Tripos, Part IA	4	10.3%	21	53.8%	0	0.0%	14	35.9%	0	0.0%	0	0.0%	0	0.0%	39
Architecture Tripos, Part IB	2	5.3%	23	60.5%	0	0.0%	11	28.9%	1	2.6%	1	2.6%	1	2.6%	38
Architecture Tripos, Part II	7	16.7%	22	52.4%	0	0.0%	11	26.2%	1	2.4%	1	2.4%	1	2.4%	42
Asian and Middle Eastern Studies Tripos, Part IA	18	26.5%	33	48.5%	0	0.0%	17	25.0%	0	0.0%	0	0.0%	0	0.0%	68
Asian and Middle Eastern Studies Tripos, Part IB	5	10.2%	32	65.3%	0	0.0%	10	20.4%	0	0.0%	2	4.1%	0	0.0%	49
Chemical Engineering Tripos, Part I	17	39.5%	15	34.9%	0	0.0%	7	16.3%	4	9.3%	0	0.0%	0	0.0%	43
Chemical Engineering Tripos, Part IIA	19	25.7%	30	40.5%	0	0.0%	16	21.6%	6	8.1%	3	4.1%	0	0.0%	74
Chemical Engineering Tripos, Part IIB	16	29.1%	31	56.4%	0	0.0%	8	14.5%	0	0.0%	0	0.0%	0	0.0%	55
Classical Tripos, Part IA	22	23.2%	0	0.0%	72	75.8%	0	0.0%	1	1.1%	0	0.0%	0	0.0%	95
Classical Tripos, Part IB	9	11.3%	50	62.5%	0	0.0%	19	23.8%	1	1.3%	1	1.3%	1	1.3%	80
Classical Tripos, Part II	17	19.3%	68	77.3%	0	0.0%	2	2.3%	0	0.0%	1	1.1%	1	1.1%	88
Computer Science Tripos, Part IA	11	16.2%	26	38.2%	0	0.0%	25	36.8%	6	8.8%	0	0.0%	0	0.0%	68
Computer Science Tripos, Part IB	15	19.5%	26	33.8%	0	0.0%	22	28.6%	8	10.4%	6	7.8%	0	0.0%	77
Computer Science Tripos, Part II	12	20.7%	26	44.8%	0	0.0%	15	25.9%	2	3.4%	3	5.2%	0	0.0%	58
Economics Tripos, Part I	41	24.3%	76	45.0%	0	0.0%	44	26.0%	7	4.1%	1	0.6%	1	0.6%	169
Economics Tripos, Part IIA	36	21.6%	80	47.9%	0	0.0%	44	26.3%	6	3.6%	1	0.6%	1	0.6%	167
Economics Tripos, Part IIB	54	32.5%	86	51.8%	0	0.0%	20	12.0%	6	3.6%	0	0.0%	0	0.0%	166
Education Studies Tripos, Part I	0	0.0%	1	50.0%	0	0.0%	0	0.0%	0	0.0%	1	50.0%	1	50.0%	2
Education Tripos, Part I	9	20.0%	32	71.1%	0	0.0%	3	6.7%	1	2.2%	0	0.0%	0	0.0%	45
Education Tripos, Part II	13	25.0%	35	67.3%	0	0.0%	4	7.7%	0	0.0%	0	0.0%	0	0.0%	52
Engineering Tripos, Part IA	81	26.0%	118	37.8%	0	0.0%	84	26.9%	21	6.7%	8	2.6%	0	0.0%	312
Engineering Tripos, Part IB	85	28.3%	119	39.7%	0	0.0%	76	25.3%	20	6.7%	0	0.0%	0	0.0%	300
Engineering Tripos, Part IIA	57	27.4%	88	42.3%	0	0.0%	46	22.1%	15	7.2%	2	1.0%	0	0.0%	208
Engineering Tripos, Part IIB	50	23.6%	92	43.4%	0	0.0%	63	29.7%	0	0.0%	7	3.3%	0	0.0%	212
English Tripos, Part I	47	23.0%	144	70.6%	0	0.0%	8	3.9%	2	1.0%	3	1.5%	0	0.0%	204
English Tripos, Part II	48	24.5%	140	71.4%	0	0.0%	8	4.1%	0	0.0%	0	0.0%	0	0.0%	196

	Class I		Class II Division (1)		Class II Undivided		Class II Division (2)		Class III		Other results		Total candidates		
	No.	%	No.	%	No.	%	No.	%	No.	%	No.	%	No.	%	
Geographical Tripos, Part IA	12	11.9%	72	71.3%	0	0.0%	17	16.8%	0	0.0%	0	0.0%	0	0.0%	101
Geographical Tripos, Part IB	17	14.0%	90	74.4%	0	0.0%	14	11.6%	0	0.0%	0	0.0%	0	0.0%	121
Geographical Tripos, Part II	24	27.0%	59	66.3%	0	0.0%	6	6.7%	0	0.0%	0	0.0%	0	0.0%	89
Historical Tripos, Part I	30	13.7%	170	77.6%	0	0.0%	18	8.2%	0	0.0%	0	0.0%	1	0.5%	219
Historical Tripos, Part II	58	27.2%	149	70.0%	0	0.0%	3	1.4%	1	0.5%	2	0.9%	2	0.9%	213
History of Art Tripos, Part I	4	12.9%	27	87.1%	0	0.0%	0	0.0%	0	0.0%	0	0.0%	0	0.0%	31
History of Art Tripos, Part IIA	3	7.7%	33	84.6%	0	0.0%	2	5.1%	1	2.6%	0	0.0%	0	0.0%	39
History of Art Tripos, Part IIB	4	11.1%	28	77.8%	0	0.0%	4	11.1%	0	0.0%	0	0.0%	0	0.0%	36
Land Economy Tripos, Part IA	3	5.9%	28	54.9%	0	0.0%	18	35.3%	1	2.0%	1	2.0%	1	2.0%	51
Land Economy Tripos, Part IB	6	9.0%	52	77.6%	0	0.0%	8	11.9%	1	1.5%	0	0.0%	0	0.0%	67
Land Economy Tripos, Part II	8	13.3%	47	78.3%	0	0.0%	4	6.7%	1	1.7%	0	0.0%	0	0.0%	60
Law Tripos, Part IA	18	9.3%	119	61.3%	0	0.0%	52	26.8%	3	1.5%	2	1.0%	2	1.0%	194
Law Tripos, Part IB	20	9.4%	145	68.4%	0	0.0%	39	18.4%	7	3.3%	1	0.5%	1	0.5%	212
Law Tripos, Part II	33	15.3%	149	69.3%	0	0.0%	27	12.6%	5	2.3%	1	0.5%	1	0.5%	215
Linguistics Tripos	5	71.4%	2	28.6%	0	0.0%	0	0.0%	0	0.0%	0	0.0%	0	0.0%	7
Management Studies Tripos	15	17.2%	69	79.3%	0	0.0%	3	3.4%	0	0.0%	0	0.0%	0	0.0%	87
Manufacturing Engineering Tripos, Part I	6	20.7%	18	62.1%	0	0.0%	4	13.8%	1	3.4%	0	0.0%	0	0.0%	29
Manufacturing Engineering Tripos, Part II	5	22.7%	12	54.5%	0	0.0%	5	22.7%	0	0.0%	0	0.0%	0	0.0%	22
Mathematical Tripos, Part IA	77	32.0%	95	39.4%	0	0.0%	40	16.6%	26	10.8%	3	1.2%	3	1.2%	241
Mathematical Tripos, Part IB	70	31.5%	91	41.0%	0	0.0%	40	18.0%	16	7.2%	5	2.3%	5	2.3%	222
Mathematical Tripos, Part II	64	30.9%	83	40.1%	0	0.0%	38	18.4%	8	3.9%	14	6.8%	14	6.8%	207
Mathematical Tripos, Part III	140	61.6%	70	35.6%	0	0.0%	0	0.0%	0	0.0%	0	0.0%	15	2.7%	225
Medical and Veterinary Sciences Tripos, Part IA	48	13.7%	0	0.0%	232	83.2%	0	0.0%	8	2.3%	3	0.9%	3	0.9%	351
Medical and Veterinary Sciences Tripos, Part IB	56	16.0%	198	56.7%	0	0.0%	86	24.6%	8	2.3%	1	0.3%	1	0.3%	349
Modern and Medieval Languages Tripos, Part IA	35	18.5%	129.5	68.5%	0	0.0%	22	11.6%	2.5	1.3%	0	0.0%	0	0.0%	189
Modern and Medieval Languages Tripos, Part IB	26	14.5%	146	81.6%	0	0.0%	6	3.4%	1	0.6%	0	0.0%	0	0.0%	179
Modern and Medieval Languages Tripos, Part II	58	32.6%	114	64.0%	0	0.0%	4	2.2%	2	1.1%	0	0.0%	0	0.0%	178
Music Tripos, Part IA	7	11.5%	32	52.5%	0	0.0%	22	36.1%	0	0.0%	0	0.0%	0	0.0%	61
Music Tripos, Part IB	9	12.7%	55	77.5%	0	0.0%	6	8.5%	1	1.4%	0	0.0%	0	0.0%	71
Music Tripos, Part II	12	16.7%	55	76.4%	0	0.0%	5	6.9%	0	0.0%	0	0.0%	0	0.0%	72
Natural Sciences Tripos, Part IA	159	24.9%	0	0.0%	435	68.2%	0	0.0%	41	6.4%	3	0.5%	3	0.5%	638
Natural Sciences Tripos, Part IB	133	21.8%	267	43.7%	0	0.0%	165	27.0%	36	5.9%	10	1.6%	10	1.6%	611
Natural Sciences Tripos, Part II: Astrophysics	1	9.1%	5	45.5%	0	0.0%	5	45.5%	0	0.0%	0	0.0%	0	0.0%	11
Natural Sciences Tripos, Part II: Biochemistry	11	26.2%	29	69.0%	0	0.0%	2	4.8%	0	0.0%	0	0.0%	0	0.0%	42
Natural Sciences Tripos, Part II: Biological and Biomedical Sciences	9	6.7%	87	64.9%	0	0.0%	35	26.1%	1	0.7%	2	1.5%	2	1.5%	134
Natural Sciences Tripos, Part II: Chemistry	32	32.3%	51	51.5%	0	0.0%	10	10.1%	6	6.1%	0	0.0%	0	0.0%	99
Natural Sciences Tripos, Part II: Experimental and Theoretical Physics	49	42.2%	42	36.2%	0	0.0%	16	13.8%	6	5.2%	3	2.6%	3	2.6%	116
Natural Sciences Tripos, Part II: Genetics	5	19.2%	18	69.2%	0	0.0%	2	7.7%	0	0.0%	1	3.8%	1	3.8%	26
Natural Sciences Tripos, Part II: Geological Sciences	8	19.0%	27	64.3%	0	0.0%	5	11.9%	2	4.8%	0	0.0%	0	0.0%	42
Natural Sciences Tripos, Part II: History and Philosophy of Science	11	28.2%	26	66.7%	0	0.0%	2	5.1%	0	0.0%	0	0.0%	0	0.0%	39

	Class I		Class II Division (1)		Class II Undivided		Class II Division (2)		Class III		Other results		Total candidates	
	No.	%	No.	%	No.	%	No.	%	No.	%	No.	%	No.	%
Natural Sciences Tripos, Part II: Materials Science and Metallurgy	8	30.8%	9	34.6%	0	0.0%	5	19.2%	1	3.8%	3	11.5%		26
Natural Sciences Tripos, Part II: Neuroscience	9	26.5%	19	55.9%	0	0.0%	5	14.7%	1	2.9%	0	0.0%		34
Natural Sciences Tripos, Part II: Pathology	8	17.4%	38	82.6%	0	0.0%	0	0.0%	0	0.0%	0	0.0%		46
Natural Sciences Tripos, Part II: Pharmacology	3	8.6%	24	68.6%	0	0.0%	7	20.0%	1	2.9%	0	0.0%		35
Natural Sciences Tripos, Part II: Physical Sciences	4	57.1%	1	14.3%	0	0.0%	1	14.3%	1	14.3%	0	0.0%		7
Natural Sciences Tripos, Part II: Physiology and Psychology	5	62.5%	3	37.5%	0	0.0%	0	0.0%	0	0.0%	0	0.0%		8
Natural Sciences Tripos, Part II: Physiology, Development, and Neuroscience	15	24.6%	41	67.2%	0	0.0%	5	8.2%	0	0.0%	0	0.0%		61
Natural Sciences Tripos, Part II: Plant Sciences	5	29.4%	11	64.7%	0	0.0%	1	5.9%	0	0.0%	0	0.0%		17
Natural Sciences Tripos, Part II: Psychology	6	15.0%	32	80.0%	0	0.0%	2	5.0%	0	0.0%	0	0.0%		40
Natural Sciences Tripos, Part II: Zoology	15	19.2%	60	76.9%	0	0.0%	1	1.3%	0	0.0%	2	2.6%		78
Natural Sciences Tripos, Part III: Astrophysics	5	55.6%	3	33.3%	0	0.0%	1	11.1%	0	0.0%	0	0.0%		9
Natural Sciences Tripos, Part III: Biochemistry	8	30.8%	15	57.7%	0	0.0%	2	7.7%	1	3.8%	0	0.0%		26
Natural Sciences Tripos, Part III: Chemistry	32	43.2%	35	47.3%	0	0.0%	5	6.8%	2	2.7%	0	0.0%		74
Natural Sciences Tripos, Part III: Experimental and Theoretical Physics	43	45.3%	30	31.6%	0	0.0%	17	17.9%	4	4.2%	1	1.1%		95
Natural Sciences Tripos, Part III: Geological Sciences	6	22.2%	19	70.4%	0	0.0%	2	7.4%	0	0.0%	0	0.0%		27
Natural Sciences Tripos, Part III: History and Philosophy of Science	3	37.5%	5	62.5%	0	0.0%	0	0.0%	0	0.0%	0	0.0%		8
Natural Sciences Tripos, Part III: Materials Science and Metallurgy	8	72.7%	3	27.3%	0	0.0%	0	0.0%	0	0.0%	0	0.0%		11
Oriental Studies Tripos, Part II	8	16.7%	34	70.8%	0	0.0%	6	12.5%	0	0.0%	0	0.0%		48
Philosophy Tripos, Part IA	6	11.5%	38	73.1%	0	0.0%	7	13.5%	0	0.0%	1	1.9%		52
Philosophy Tripos, Part IB	8	17.0%	33	70.2%	0	0.0%	6	12.8%	0	0.0%	0	0.0%		47
Philosophy Tripos, Part II	13	30.2%	28	65.1%	0	0.0%	2	4.7%	0	0.0%	0	0.0%		43
Politics, Psychology, and Sociology Tripos, Part I	20	17.1%	87	74.4%	0	0.0%	9	7.7%	0	0.0%	1	0.9%		117
Social and Political Sciences Tripos, Part IIA	14	12.4%	89	78.8%	0	0.0%	8	7.1%	1	0.9%	1	0.9%		113
Social and Political Sciences Tripos, Part IIB	31	29.2%	68	64.2%	0	0.0%	5	4.7%	2	1.9%	0	0.0%		106
Theological and Religious Studies Tripos, Part I	4	7.4%	40	74.1%	0	0.0%	7	13.0%	2	3.7%	1	1.9%		54
Theological and Religious Studies Tripos, Part IIA	10	14.3%	52	74.3%	0	0.0%	6	8.6%	0	0.0%	2	2.9%		70
Theological and Religious Studies Tripos, Part IIB	16	25.0%	43	67.2%	0	0.0%	3	4.7%	0	0.0%	2	3.1%		64
<b>Totals</b>	<b>2,357</b>	<b>22.7%</b>	<b>5,361.5</b>	<b>51.6%</b>	<b>799</b>	<b>7.7%</b>	<b>1,442</b>	<b>13.9%</b>	<b>311.5</b>	<b>3.0%</b>	<b>125</b>	<b>1.2%</b>	<b>10,396</b>	



## Men's and Women's Tripos examination results, 2010

	Class I				Class II (1)				Class II (2)				Class III				Others				Total					
	Men		Women		Men		Women		Men		Women		Men		Women		Men		Women		Men		Women			
	No.	%	No.	%	No.	%	No.	%	No.	%	No.	%	No.	%	No.	%	No.	%	No.	%	No.	%	No.	%		
Anglo-Saxon, Norse, and Celtic Tripos, Part I	2	22.2%	0	0.0%	6	66.7%	9	81.8%	0	0.0%	1	11.1%	2	18.2%	0	0.0%	0	0.0%	0	0.0%	0	0.0%	9	45.0%	11	55.0%
Anglo-Saxon, Norse, and Celtic Tripos, Part II	1	12.5%	4	22.2%	7	87.5%	14	77.8%	0	0.0%	0	0.0%	0	0.0%	0	0.0%	0	0.0%	0	0.0%	0	0.0%	8	30.8%	18	69.2%
Archaeological and Anthropological Tripos, Part I	6	30.0%	13	24.5%	12	60.0%	36	67.9%	0	0.0%	2	10.0%	4	7.5%	0	0.0%	0	0.0%	0	0.0%	0	0.0%	20	27.4%	53	72.6%
Archaeological and Anthropological Tripos, Part IIA: Archaeology	0	0.0%	3	30.0%	10	90.9%	7	70.0%	0	0.0%	0	0.0%	0	0.0%	1	9.1%	0	0.0%	0	0.0%	0	0.0%	11	52.4%	10	47.6%
Archaeological and Anthropological Tripos, Part IIA: Biological Anthropology	2	28.6%	1	6.3%	5	71.4%	14	87.5%	0	0.0%	0	0.0%	0	0.0%	0	0.0%	0	0.0%	0	0.0%	1	6.3%	7	30.4%	16	69.6%
Archaeological and Anthropological Tripos, Part IIA: Social Anthropology	2	40.0%	2	6.7%	3	60.0%	25	83.3%	0	0.0%	0	0.0%	2	6.7%	0	0.0%	1	3.3%	0	0.0%	0	0.0%	5	14.3%	30	85.7%
Archaeological and Anthropological Tripos, Part IIB: Archaeology	1	50.0%	7	43.8%	1	50.0%	9	56.3%	0	0.0%	0	0.0%	0	0.0%	0	0.0%	0	0.0%	0	0.0%	0	0.0%	2	11.1%	16	88.9%
Archaeological and Anthropological Tripos, Part IIB: Biological Anthropology	3	33.3%	5	27.8%	5	55.6%	10	55.6%	0	0.0%	1	11.1%	3	16.7%	0	0.0%	0	0.0%	0	0.0%	0	0.0%	9	33.3%	18	66.7%
Archaeological and Anthropological Tripos, Part IIB: Social Anthropology	1	12.5%	5	19.2%	5	62.5%	20	76.9%	0	0.0%	1	12.5%	1	3.8%	0	0.0%	0	0.0%	0	0.0%	1	12.5%	8	23.5%	26	76.5%
Architecture Tripos, Part IA	2	11.8%	2	9.1%	11	64.7%	10	45.5%	0	0.0%	4	23.5%	10	45.5%	0	0.0%	0	0.0%	0	0.0%	0	0.0%	17	43.6%	22	56.4%
Architecture Tripos, Part IB	2	10.0%	0	0.0%	13	65.0%	10	55.6%	0	0.0%	4	20.0%	7	38.9%	0	0.0%	1	5.6%	1	5.0%	0	0.0%	20	52.6%	18	47.4%
Architecture Tripos, Part II	2	10.5%	5	21.7%	9	47.4%	13	56.5%	0	0.0%	6	31.6%	5	21.7%	1	5.3%	0	0.0%	1	5.3%	0	0.0%	19	45.2%	23	54.8%
Asian and Middle Eastern Studies Tripos, Part IA	11	55.0%	7	14.6%	5	25.0%	28	58.3%	0	0.0%	4	20.0%	13	27.1%	0	0.0%	0	0.0%	0	0.0%	0	0.0%	20	29.4%	48	70.6%
Asian and Middle Eastern Studies Tripos, Part IB	4	19.0%	1	3.6%	12	57.1%	20	71.4%	0	0.0%	3	14.3%	7	25.0%	0	0.0%	0	0.0%	2	9.5%	0	0.0%	21	42.9%	28	57.1%
Chemical Engineering Tripos, Part I	11	37.9%	6	42.9%	11	37.9%	4	28.6%	0	0.0%	3	10.3%	4	28.6%	4	13.8%	0	0.0%	0	0.0%	0	0.0%	29	67.4%	14	32.6%
Chemical Engineering Tripos, Part IIA	12	25.5%	7	25.9%	17	36.2%	13	48.1%	0	0.0%	12	25.5%	4	14.8%	4	8.5%	2	7.4%	2	4.3%	1	3.7%	37	63.5%	27	36.5%
Chemical Engineering Tripos, Part IIB	10	30.3%	6	27.3%	19	57.6%	12	54.5%	0	0.0%	4	12.1%	4	18.2%	0	0.0%	0	0.0%	0	0.0%	0	0.0%	33	60.0%	22	40.0%
Classical Tripos, Part IA	10	26.3%	12	21.1%	0	0.0%	0	0.0%	27	71.1%	45	78.9%	0	0.0%	0	0.0%	1	2.6%	0	0.0%	0	0.0%	38	40.0%	57	60.0%
Classical Tripos, Part IB	6	16.7%	3	6.8%	21	58.3%	29	65.9%	0	0.0%	9	25.0%	10	22.7%	0	0.0%	1	2.9%	0	0.0%	1	2.9%	36	45.0%	44	55.0%
Classical Tripos, Part II	5	17.2%	12	20.3%	22	75.9%	46	78.0%	0	0.0%	2	6.9%	0	0.0%	0	0.0%	0	0.0%	0	0.0%	0	0.0%	29	33.0%	59	67.0%
Computer Science Tripos, Part IA	10	18.2%	1	7.7%	22	40.0%	4	30.8%	0	0.0%	17	30.9%	8	61.5%	6	10.9%	0	0.0%	0	0.0%	0	0.0%	55	80.9%	13	19.1%
Computer Science Tripos, Part IB	10	15.2%	5	45.5%	25	37.9%	1	9.1%	0	0.0%	21	31.8%	1	9.1%	6	9.1%	2	18.2%	4	6.1%	2	18.2%	66	85.7%	11	14.3%
Computer Science Tripos, Part II	12	22.6%	0	0.0%	25	47.2%	1	20.0%	0	0.0%	11	20.8%	4	80.0%	2	3.8%	0	0.0%	3	5.7%	0	0.0%	53	91.4%	5	8.6%
Economics Tripos, Part I	28	25.8%	13	21.3%	55	50.9%	21	34.4%	0	0.0%	21	19.4%	23	37.7%	4	3.7%	3	4.9%	0	0.0%	1	1.6%	108	63.9%	61	36.1%
Economics Tripos, Part IA	24	22.4%	12	20.0%	55	51.4%	25	41.7%	0	0.0%	26	24.3%	18	30.0%	2	1.9%	4	6.7%	0	0.0%	1	1.7%	107	64.1%	60	35.9%
Economics Tripos, Part IIB	30	29.7%	24	36.9%	56	55.4%	30	46.2%	0	0.0%	11	10.9%	9	13.8%	4	4.0%	2	3.1%	0	0.0%	0	0.0%	101	60.8%	65	39.2%
Education Studies Tripos, Part I	0	0.0%	0	0.0%	0	0.0%	1	50.0%	0	0.0%	0	0.0%	0	0.0%	0	0.0%	0	0.0%	0	0.0%	0	0.0%	1	50.0%	2	100.0%
Education Studies Tripos, Part II	2	20.0%	7	20.0%	5	50.0%	27	77.1%	0	0.0%	2	20.0%	4	2.9%	1	10.0%	0	0.0%	0	0.0%	0	0.0%	0	0.0%	35	77.8%
Education Tripos, Part I	2	40.0%	11	23.4%	3	60.0%	32	68.1%	0	0.0%	0	0.0%	4	8.5%	0	0.0%	0	0.0%	0	0.0%	0	0.0%	5	9.6%	47	90.4%
Engineering Tripos, Part IA	71	30.1%	10	13.2%	91	38.6%	27	35.5%	0	0.0%	55	23.3%	29	38.2%	15	6.4%	6	7.9%	4	1.7%	4	5.3%	236	75.6%	76	24.4%
Engineering Tripos, Part IB	75	33.2%	10	13.5%	90	39.8%	29	39.2%	0	0.0%	50	22.1%	26	35.1%	11	4.9%	9	12.2%	0	0.0%	0	0.0%	226	75.3%	74	24.7%
Engineering Tripos, Part IIA	52	29.5%	5	15.6%	75	42.6%	13	40.6%	0	0.0%	37	21.0%	11	6.3%	4	12.5%	1	0.6%	1	0.6%	1	3.1%	176	84.6%	32	15.4%
Engineering Tripos, Part IIB	39	24.1%	11	22.0%	67	41.4%	25	50.0%	0	0.0%	49	30.2%	14	28.0%	0	0.0%	7	4.3%	0	0.0%	0	0.0%	162	76.4%	50	23.6%
English Tripos, Part I	24	30.8%	23	18.3%	48	61.5%	96	76.2%	0	0.0%	4	5.1%	4	3.2%	1	1.3%	1	0.8%	1	1.3%	2	1.6%	78	38.2%	126	61.8%
English Tripos, Part II	19	32.8%	29	21.0%	38	65.5%	102	73.9%	0	0.0%	1	1.7%	7	5.1%	0	0.0%	0	0.0%	0	0.0%	0	0.0%	58	29.6%	138	70.4%
Geographical Tripos, Part IA	7	17.5%	5	8.2%	26	65.0%	46	75.4%	0	0.0%	7	17.5%	10	16.4%	0	0.0%	0	0.0%	0	0.0%	0	0.0%	40	39.6%	61	60.4%
Geographical Tripos, Part IB	7	14.0%	10	14.1%	33	66.0%	57	80.3%	0	0.0%	10	20.0%	4	5.6%	0	0.0%	0	0.0%	0	0.0%	0	0.0%	50	41.3%	71	58.7%
Geographical Tripos, Part II	12	33.3%	12	22.6%	22	61.1%	37	69.8%	0	0.0%	2	5.6%	4	7.5%	0	0.0%	0	0.0%	0	0.0%	0	0.0%	36	40.4%	53	59.6%
Historical Tripos, Part I	21	18.8%	9	8.4%	82	73.2%	88	82.2%	0	0.0%	8	7.1%	10	9.3%	0	0.0%	0	0.0%	1	0.9%	0	0.0%	112	51.1%	107	48.9%
Historical Tripos, Part II	37	34.9%	21	19.6%	64	60.4%	85	79.4%	0	0.0%	2	1.9%	1	0.9%	1	0.9%	0	0.0%	2	1.9%	0	0.0%	106	49.8%	107	50.2%

	Class I						Class II (1)						Class II (2)						Class III						Others						Total											
	Men			Women			Men			Women			Men			Women			Men			Women			Men			Women			Men			Women			Men			Women		
	No.	%	No.	%	No.	%	No.	%	No.	%	No.	%	No.	%	No.	%	No.	%	No.	%	No.	%	No.	%	No.	%	No.	%	No.	%	No.	%	No.	%	No.	%						
History of Art Tripos, Part I	1	12.5%	3	13.0%	7	87.5%	24	85.7%	0	0.0%	0	0.0%	0	0.0%	0	0.0%	0	0.0%	0	0.0%	0	0.0%	0	0.0%	0	0.0%	0	0.0%	0	0.0%	0	0.0%	8	25.8%	23	74.2%						
History of Art Tripos, Part II	1	9.1%	2	7.1%	9	81.8%	24	85.7%	0	0.0%	0	0.0%	2	7.1%	1	9.1%	0	0.0%	0	0.0%	0	0.0%	0	0.0%	0	0.0%	0	0.0%	0	0.0%	0	0.0%	11	28.2%	28	71.8%						
History of Art Tripos, Part IB	2	18.2%	2	8.0%	7	63.6%	21	84.0%	0	0.0%	0	0.0%	2	18.2%	2	8.0%	0	0.0%	0	0.0%	0	0.0%	0	0.0%	0	0.0%	0	0.0%	0	0.0%	0	0.0%	11	30.6%	25	69.4%						
Land Economy Tripos, Part I	1	3.2%	2	10.0%	15	48.4%	13	65.0%	0	0.0%	0	0.0%	4	20.0%	4	20.0%	1	3.2%	0	0.0%	0	0.0%	0	0.0%	0	0.0%	0	0.0%	1	5.0%	31	60.8%	20	39.2%								
Land Economy Tripos, Part IB	2	5.7%	4	12.5%	27	77.1%	25	78.1%	0	0.0%	0	0.0%	5	14.3%	3	9.4%	1	2.9%	0	0.0%	0	0.0%	0	0.0%	0	0.0%	0	0.0%	0	0.0%	35	55.2%	32	47.8%								
Land Economy Tripos, Part II	4	12.1%	4	14.8%	26	78.8%	21	77.8%	0	0.0%	0	0.0%	3	9.1%	1	3.7%	0	0.0%	0	0.0%	0	0.0%	0	0.0%	0	0.0%	0	0.0%	0	0.0%	33	55.0%	27	45.0%								
Law Tripos, Part I	13	14.8%	5	4.7%	53	60.2%	66	62.3%	0	0.0%	0	0.0%	22	25.0%	30	28.3%	0	0.0%	0	0.0%	0	0.0%	2	1.9%	88	45.4%	106	54.6%														
Law Tripos, Part IB	10	13.0%	10	7.4%	53	68.8%	92	68.1%	0	0.0%	0	0.0%	11	14.3%	28	20.7%	2	2.6%	5	3.7%	1	1.3%	0	0.0%	77	36.3%	135	63.7%														
Law Tripos, Part II	15	16.3%	18	14.6%	66	71.7%	83	67.5%	0	0.0%	9	9.8%	18	14.6%	1	1.1%	4	3.3%	1	1.1%	0	0.0%	92	42.8%	123	57.2%																
Linguistics Tripos	3	100.0%	2	50.0%	0	0.0%	2	50.0%	0	0.0%	0	0.0%	0	0.0%	0	0.0%	0	0.0%	0	0.0%	0	0.0%	0	0.0%	0	0.0%	0	0.0%	3	42.9%	4	57.1%										
Management Studies Tripos	8	16.0%	7	18.9%	42	84.0%	27	73.0%	0	0.0%	0	0.0%	0	0.0%	3	8.1%	0	0.0%	0	0.0%	0	0.0%	0	0.0%	0	0.0%	0	0.0%	50	57.5%	37	42.5%										
Manufacturing Engineering Tripos, Part I	2	11.8%	4	33.3%	11	64.7%	7	58.3%	0	0.0%	0	0.0%	3	17.6%	1	8.3%	1	5.9%	0	0.0%	0	0.0%	0	0.0%	0	0.0%	0	0.0%	17	58.6%	12	41.4%										
Manufacturing Engineering Tripos, Part II	3	30.0%	2	16.7%	4	40.0%	8	66.7%	0	0.0%	0	0.0%	3	30.0%	2	16.7%	0	0.0%	0	0.0%	0	0.0%	0	0.0%	0	0.0%	0	0.0%	10	45.5%	12	54.5%										
Mathematical Tripos, Part IA	71	35.9%	6	14.0%	81	40.9%	14	32.6%	0	0.0%	0	0.0%	29	14.6%	11	25.6%	17	8.6%	9	20.9%	0	0.0%	3	7.0%	198	82.2%	43	17.8%														
Mathematical Tripos, Part IB	60	34.7%	10	20.4%	68	39.3%	23	46.9%	0	0.0%	0	0.0%	31	17.9%	9	18.4%	9	5.2%	7	14.3%	5	2.9%	0	0.0%	173	77.9%	49	22.1%														
Mathematical Tripos, Part II	55	32.0%	9	25.7%	67	39.0%	16	45.7%	0	0.0%	0	0.0%	32	18.6%	6	17.1%	6	3.5%	2	5.7%	12	7.0%	2	5.7%	172	83.1%	35	16.9%														
Mathematical Tripos, Part III	126	66.8%	14	34.3%	55	30.4%	15	62.9%	0	0.0%	0	0.0%	0	0.0%	0	0.0%	0	0.0%	0	0.0%	12	2.7%	3	2.9%	193	84.0%	32	16.0%														
Medical and Veterinary Sciences Tripos, Part IA	20	12.3%	28	14.8%	0	0.0%	0	0.0%	136	84.0%	156	82.5%	0	0.0%	0	0.0%	5	3.1%	3	1.6%	1	0.6%	2	1.1%	162	46.2%	189	53.8%														
Medical and Veterinary Sciences Tripos, Part IB	28	18.1%	28	14.4%	83	53.5%	115	59.3%	0	0.0%	0	0.0%	40	25.8%	46	23.7%	4	2.6%	4	2.1%	0	0.0%	1	0.5%	155	44.4%	194	55.6%														
Modern and Medieval Languages Tripos, Part IA	13	22.4%	22	16.8%	41	70.7%	88.5	67.6%	0	0.0%	0	0.0%	3.5	6.0%	18.5	14.1%	0.5	0.9%	2	1.5%	0	0.0%	0	0.0%	58	30.7%	131	69.3%														
Modern and Medieval Languages Tripos, Part IB	11	19.3%	15	12.3%	44	77.2%	102	83.6%	0	0.0%	0	0.0%	1	1.8%	5	4.1%	1	1.8%	0	0.0%	0	0.0%	0	0.0%	57	31.8%	122	68.2%														
Modern and Medieval Languages Tripos, Part II	21	36.2%	37	30.8%	33	56.9%	81	67.5%	0	0.0%	0	0.0%	3	5.2%	1	0.8%	1	1.7%	1	0.8%	0	0.0%	0	0.0%	58	32.6%	120	67.4%														
Music Tripos, Part IA	6	17.1%	1	3.8%	21	60.0%	11	42.3%	0	0.0%	0	0.0%	8	22.9%	14	53.8%	0	0.0%	0	0.0%	0	0.0%	0	0.0%	35	57.4%	26	42.6%														
Music Tripos, Part IB	9	20.8%	0	0.0%	29	67.4%	26	92.9%	0	0.0%	0	0.0%	4	9.3%	2	7.1%	1	2.3%	0	0.0%	0	0.0%	0	0.0%	43	60.6%	28	39.4%														
Music Tripos, Part II	5	12.5%	7	21.9%	32	80.0%	23	71.9%	0	0.0%	0	0.0%	3	7.5%	2	6.3%	0	0.0%	0	0.0%	0	0.0%	0	0.0%	40	55.6%	32	44.4%														
Natural Sciences Tripos, Part IA	117	30.4%	42	16.6%	0	0.0%	0	0.0%	244	63.4%	191	75.5%	0	0.0%	22	5.7%	19	7.5%	2	0.4%	385	60.3%	253	39.7%																		
Natural Sciences Tripos, Part IB	97	27.2%	36	14.2%	149	41.7%	118	46.5%	0	0.0%	0	0.0%	87	24.4%	78	30.7%	18	5.0%	18	7.1%	6	1.7%	4	1.6%	357	58.4%	254	41.6%														
Natural Sciences Tripos, Part II: Astrophysics	1	10.0%	0	0.0%	5	50.0%	0	0.0%	0	0.0%	4	40.0%	1	100.0%	0	0.0%	0	0.0%	0	0.0%	0	0.0%	0	0.0%	10	90.9%	1	9.1%														
Natural Sciences Tripos, Part II: Biochemistry	6	25.0%	5	27.8%	18	75.0%	11	61.1%	0	0.0%	0	0.0%	0	0.0%	2	11.1%	0	0.0%	0	0.0%	0	0.0%	0	0.0%	24	57.1%	18	42.9%														
Natural Sciences Tripos, Part II: Biological and Biomedical Sciences	6	10.2%	3	4.0%	34	57.6%	53	70.7%	0	0.0%	0	0.0%	17	28.8%	18	24.0%	1	1.7%	0	0.0%	1	1.7%	1	1.3%	59	44.0%	75	56.0%														
Natural Sciences Tripos, Part II: Chemistry	21	34.4%	11	28.9%	32	52.5%	19	50.0%	0	0.0%	0	0.0%	4	6.6%	6	15.8%	4	6.6%	2	5.3%	0	0.0%	0	0.0%	61	61.6%	38	38.4%														
Natural Sciences Tripos, Part II: Experimental and Theoretical Physics	42	45.7%	7	29.2%	30	32.6%	12	50.0%	0	0.0%	0	0.0%	13	14.1%	3	12.5%	5	5.4%	1	4.2%	1	2.2%	1	4.2%	92	79.3%	24	20.7%														
Natural Sciences Tripos, Part II: Genetics	1	10.0%	4	25.0%	8	80.0%	10	62.5%	0	0.0%	0	0.0%	1	10.0%	1	6.3%	0	0.0%	0	0.0%	0	0.0%	0	0.0%	1	6.3%	10	38.5%	16	61.5%												
Natural Sciences Tripos, Part II: Geological Sciences	6	24.0%	2	11.8%	14	56.0%	13	76.5%	0	0.0%	0	0.0%	3	12.0%	2	11.8%	2	8.0%	0	0.0%	0	0.0%	0	0.0%	25	59.5%	17	40.5%														
Natural Sciences Tripos, Part II: History and Philosophy of Science	3	15.8%	8	40.0%	14	73.7%	12	60.0%	0	0.0%	0	0.0%	2	10.5%	0	0.0%	0	0.0%	0	0.0%	0	0.0%	0	0.0%	19	48.7%	20	51.3%														
Natural Sciences Tripos, Part II: Materials Science and Metallurgy	5	31.3%	3	30.0%	6	37.5%	3	30.0%	0	0.0%	0	0.0%	4	25.0%	1	10.0%	1	6.3%	0	0.0%	0	0.0%	0	0.0%	3	30.0%	16	61.5%	10	38.5%												
Natural Sciences Tripos, Part II: Neuroscience	4	20.0%	5	35.7%	11	55.0%	8	57.1%	0	0.0%	0	0.0%	4	20.0%	1	7.1%	1	5.0%	0	0.0%	0	0.0%	0	0.0%	20	58.8%	14	41.2%														



	Class I				Class II (1)				Class II				Class II (2)				Class III				Others				Total			
	Men		Women		Men		Women		Men		Women		Men		Women		Men		Women		Men		Women		Men		Women	
	No.	%	No.	%	No.	%	No.	%	No.	%	No.	%	No.	%	No.	%	No.	%	No.	%	No.	%	No.	%	No.	%		
Natural Sciences Tripos, Part II: Pathology	4	20.0%	4	15.4%	16	80.0%	22	84.6%	0	0.0%	0	0.0%	0	0.0%	0	0.0%	0	0.0%	0	0.0%	0	0.0%	0	0.0%	20	43.5%	26	56.5%
Natural Sciences Tripos, Part II: Pharmacology	2	14.3%	1	4.8%	6	42.9%	18	85.7%	0	0.0%	0	0.0%	5	35.7%	2	9.5%	1	7.1%	0	0.0%	0	0.0%	0	0.0%	14	40.0%	21	60.0%
Natural Sciences Tripos, Part II: Physical Sciences	3	100.0%	1	0.0%	0	0.0%	1	25.0%	0	0.0%	0	0.0%	0	0.0%	1	25.0%	0	0.0%	0	0.0%	0	0.0%	0	0.0%	3	42.9%	4	57.1%
Natural Sciences Tripos, Part II: Physiology and Psychology	2	66.7%	3	60.0%	1	33.3%	2	40.0%	0	0.0%	0	0.0%	0	0.0%	0	0.0%	0	0.0%	0	0.0%	0	0.0%	0	0.0%	3	37.5%	5	62.5%
Natural Sciences Tripos, Part II: Physiology, Development, and Neuroscience	6	31.6%	9	21.4%	11	57.9%	30	71.4%	0	0.0%	0	0.0%	2	10.5%	3	7.1%	0	0.0%	0	0.0%	0	0.0%	0	0.0%	19	31.1%	42	68.9%
Natural Sciences Tripos, Part II: Sciences	3	42.9%	2	20.0%	3	42.9%	8	80.0%	0	0.0%	0	0.0%	1	14.3%	0	0.0%	0	0.0%	0	0.0%	0	0.0%	0	0.0%	7	41.2%	10	58.8%
Natural Sciences Tripos, Part II: Zoology	3	21.4%	3	11.5%	10	71.4%	22	84.6%	0	0.0%	0	0.0%	1	7.1%	1	3.8%	0	0.0%	0	0.0%	0	0.0%	0	0.0%	14	35.0%	26	65.0%
Natural Sciences Tripos, Part III: Astrophysics	6	20.7%	9	18.4%	21	72.4%	39	79.6%	0	0.0%	0	0.0%	1	3.4%	0	0.0%	0	0.0%	0	0.0%	1	3.4%	1	2.0%	29	37.2%	49	62.8%
Natural Sciences Tripos, Part III: Biochemistry	3	60.0%	2	50.0%	1	20.0%	2	50.0%	0	0.0%	0	0.0%	0	0.0%	1	20.0%	0	0.0%	0	0.0%	0	0.0%	0	0.0%	5	55.6%	4	44.4%
Natural Sciences Tripos, Part III: Chemistry	4	26.7%	4	36.4%	8	53.3%	7	63.6%	0	0.0%	0	0.0%	2	13.3%	0	0.0%	0	0.0%	1	6.7%	0	0.0%	0	0.0%	15	57.7%	11	42.3%
Natural Sciences Tripos, Part III: Experimental and Theoretical Physics	25	46.3%	7	35.0%	25	46.3%	10	50.0%	0	0.0%	0	0.0%	3	5.6%	2	10.0%	1	1.9%	1	5.0%	0	0.0%	0	0.0%	54	73.0%	20	27.0%
Natural Sciences Tripos, Part III: Geological Sciences	34	46.6%	9	40.9%	21	28.8%	9	40.9%	0	0.0%	0	0.0%	13	17.8%	4	18.2%	4	5.5%	0	0.0%	0	0.0%	1	1.4%	73	76.8%	22	23.2%
Natural Sciences Tripos, Part III: History and Philosophy of Science	4	33.3%	2	13.3%	6	50.0%	13	86.7%	0	0.0%	0	0.0%	2	16.7%	0	0.0%	0	0.0%	0	0.0%	0	0.0%	0	0.0%	12	44.4%	15	55.6%
Natural Sciences Tripos, Part III: Materials Science and Metallurgy	2	40.0%	1	33.3%	3	60.0%	2	66.7%	0	0.0%	0	0.0%	0	0.0%	0	0.0%	0	0.0%	0	0.0%	0	0.0%	0	0.0%	5	62.5%	3	37.5%
Natural Sciences Tripos, Part II: Oriental Studies Tripos, Part II	4	57.1%	4	100.0%	3	42.9%	0	0.0%	0	0.0%	0	0.0%	0	0.0%	0	0.0%	0	0.0%	0	0.0%	0	0.0%	0	0.0%	7	63.6%	4	36.4%
Philosophy Tripos, Part IA	2	9.5%	6	22.2%	15	71.4%	19	70.4%	0	0.0%	0	0.0%	4	19.0%	2	7.4%	0	0.0%	0	0.0%	0	0.0%	0	0.0%	21	43.8%	27	56.3%
Philosophy Tripos, Part IB	4	19.0%	2	6.5%	13	61.9%	25	80.6%	0	0.0%	0	0.0%	3	14.3%	4	12.9%	0	0.0%	0	0.0%	1	4.8%	1	4.8%	21	40.4%	31	59.6%
Philosophy Tripos, Part I	6	19.4%	2	12.5%	20	64.5%	13	81.3%	0	0.0%	0	0.0%	5	16.1%	1	6.3%	0	0.0%	0	0.0%	0	0.0%	0	0.0%	31	66.0%	16	34.0%
Politics, Psychology, and Sociology Tripos, Part I	7	26.9%	6	35.3%	17	65.4%	11	64.7%	0	0.0%	0	0.0%	2	7.7%	0	0.0%	0	0.0%	0	0.0%	0	0.0%	0	0.0%	26	60.5%	17	39.5%
Social and Political Sciences Tripos, Part IIA	4	10.3%	16	20.5%	32	82.1%	55	70.5%	0	0.0%	0	0.0%	3	7.7%	6	7.7%	0	0.0%	0	0.0%	0	0.0%	0	0.0%	39	33.3%	78	66.7%
Social and Political Sciences Tripos, Part IIB	6	14.0%	8	11.4%	32	74.4%	57	81.4%	0	0.0%	0	0.0%	3	7.0%	5	7.1%	1	2.3%	0	0.0%	1	2.3%	0	0.0%	43	38.1%	70	61.9%
Theological and Religious Studies Tripos, Part I	12	35.3%	19	26.4%	20	58.8%	48	66.7%	0	0.0%	0	0.0%	1	2.9%	4	5.6%	1	2.9%	1	1.4%	0	0.0%	0	0.0%	34	32.1%	72	67.9%
Theological and Religious Studies Tripos, Part IIA	3	12.5%	1	3.3%	18	75.0%	22	73.3%	0	0.0%	0	0.0%	2	8.3%	5	16.7%	0	0.0%	2	6.7%	1	4.2%	0	0.0%	24	44.4%	30	55.6%
Theological and Religious Studies Tripos, Part IIB	4	12.5%	6	15.8%	24	75.0%	28	73.7%	0	0.0%	0	0.0%	2	6.3%	4	10.5%	0	0.0%	0	0.0%	2	6.3%	0	0.0%	32	45.7%	38	54.3%
Totals	8	34.8%	8	19.5%	13	56.5%	30	73.2%	0	0.0%	0	0.0%	0	0.0%	3	7.3%	0	0.0%	0	0.0%	0	0.0%	2	8.7%	23	35.9%	41	64.1%
	1,535	27.2%	822	17.3%	2,610	46.3%	2,751.5	57.8%	7.2%	392	8.2%	811.5	14.4%	630.5	13.2%	189.5	3.4%	122	2.6%	82	1.5%	43	0.9%	5,635.0	54.2%	4,761	45.8%	



## Preliminary and other examination results, 2010

	Class I		Class II Division (1)		Class II Undivided		Class II Division (2)		Class III		Other results		Total candidates	
	No.	%	No.	%	No.	%	No.	%	No.	%	No.	%	No.	No.
LL.M. Examination	33	20.8%	116	73.0%	0	0.0%	9	5.7%	1	0.6%	0	0.0%		159
Preliminary Examination for Part I of the Anglo-Saxon, Norse, and Celtic Tripos	7	38.9%	8	44.4%	0	0.0%	2	11.1%	1	5.6%	0	0.0%		18
Preliminary Examination for Part II of the English Tripos	0	0.0%	3	75.0%	0	0.0%	1	25.0%	0	0.0%	0	0.0%		4
Preliminary Examination for Part II of the Historical Tripos	1	11.1%	6	66.7%	0	0.0%	2	22.2%	0	0.0%	0	0.0%		9
Preliminary Examination for Part II of the Natural Sciences Tripos: Psychology	1	50.0%	0	0.0%	0	0.0%	1	50.0%	0	0.0%	0	0.0%		2
Second Examination for the Bachelor of Theology for Ministry Degree	4	18.2%	0	0.0%	18	81.8%	0	0.0%	0	0.0%	0	0.0%		22
<b>Totals</b>	<b>46</b>	<b>21.5%</b>	<b>133</b>	<b>62.1%</b>	<b>18</b>	<b>8.4%</b>	<b>15</b>	<b>7.0%</b>	<b>2</b>	<b>0.9%</b>	<b>0</b>	<b>0.0%</b>	<b>0</b>	<b>214</b>

This table excludes unclassified Preliminary examinations in Classics, Education, History, and the First Examination in Theology for Ministry (see Table 9a).

### Men's and Women's Preliminary and other examination results, 2010

	Class I				Class II (1)				Class II				Class II (2)				Class III				Others				Total			
	Men		Women		Men		Women		Men		Women		Men		Women		Men		Women		Men		Women		Men		Women	
	No.	%	No.	%	No.	%	No.	%	No.	%	No.	%	No.	%	No.	%	No.	%	No.	%	No.	%	No.	%	No.	%	No.	%
LL.M. Examination	17	22.4%	16	19.3%	55	72.4%	61	73.5%	0	0.0%	0	0.0%	3	3.9%	6	7.2%	1	1.3%	0	0.0%	0	0.0%	0	0.0%	76	47.8%	83	52.2%
Preliminary Examination for Part I of the Anglo-Saxon, Norse, and Celtic Tripos	3	37.5%	4	40.0%	3	37.5%	5	50.0%	0	0.0%	0	0.0%	2	25.0%	0	0.0%	0	0.0%	0	0.0%	1	10.0%	0	0.0%	8	44.4%	10	55.6%
Preliminary Examination for Part II of the English Tripos	0	0.0%	0	0.0%	0	0.0%	3	75.0%	0	0.0%	0	0.0%	0	0.0%	1	25.0%	0	0.0%	0	0.0%	0	0.0%	0	0.0%	0	0.0%	4	100.0%
Preliminary Examination for Part II of the Historical Tripos	0	0.0%	1	16.7%	2	66.7%	4	66.7%	0	0.0%	0	0.0%	1	33.3%	1	16.7%	0	0.0%	0	0.0%	0	0.0%	0	0.0%	3	33.3%	6	66.7%
Preliminary Examination for Part II of the Natural Sciences Tripos: Psychology	0	0.0%	1	0.0%	0	0.0%	0	0.0%	0	0.0%	0	0.0%	0	0.0%	1	50.0%	0	0.0%	0	0.0%	0	0.0%	0	0.0%	0	0.0%	2	100.0%
Second Examination for the Bachelor of Theology for Ministry Degree	4	28.6%	0	0.0%	0	0.0%	0	0.0%	10	71.4%	8	100.0%	0	0.0%	0	0.0%	0	0.0%	0	0.0%	0	0.0%	0	0.0%	14	63.6%	8	36.4%
<b>Totals</b>	<b>24</b>	<b>23.8%</b>	<b>22</b>	<b>19.5%</b>	<b>60</b>	<b>59.4%</b>	<b>73</b>	<b>64.6%</b>	<b>10</b>	<b>9.9%</b>	<b>8</b>	<b>7.1%</b>	<b>6</b>	<b>5.9%</b>	<b>9</b>	<b>8.0%</b>	<b>1</b>	<b>1.0%</b>	<b>1</b>	<b>0.9%</b>	<b>0</b>	<b>0.0%</b>	<b>0</b>	<b>0.0%</b>	<b>101</b>	<b>47.2%</b>	<b>113</b>	<b>52.8%</b>

This table excludes unclassified Preliminary examinations in Classics, Education, History, and the First Examination in Theology for Ministry (see Table 9a).

## Results in all examinations, 2010

	Class I		Class II Division (1)		Class II Undivided		Class II Division (2)		Class III		Other results		Total candidates	
	No.	%	No.	%	No.	%	No.	%	No.	%	No.	%	No.	%
Anglo-Saxon, Norse, and Celtic	14	21.9%	44	68.8%	0	0.0%	5	7.8%	1	1.6%	0	0.0%	64	0.0%
Archaeology and Anthropology	51	22.1%	162	70.1%	0	0.0%	14	6.1%	2	0.9%	2	0.9%	231	0.9%
Architecture	13	10.9%	66	55.5%	0	0.0%	36	30.3%	2	1.7%	2	1.7%	119	1.7%
Asian and Middle Eastern Studies	23	19.7%	65	55.6%	0	0.0%	27	23.1%	0	0.0%	2	1.7%	117	1.7%
Chemical Engineering	52	30.2%	76	44.2%	0	0.0%	31	18.0%	10	5.8%	3	1.7%	172	1.7%
Classics	48	18.3%	118	44.9%	72	27.4%	21	8.0%	2	0.8%	2	0.8%	263	0.8%
Computer Science	38	18.7%	78	38.4%	0	0.0%	62	30.5%	16	7.9%	9	4.4%	203	4.4%
Economics	131	26.1%	242	48.2%	0	0.0%	108	21.5%	19	3.8%	2	0.4%	502	0.4%
Education	22	22.2%	68	68.7%	0	0.0%	7	7.1%	1	1.0%	1	1.0%	99	1.0%
Engineering	273	26.5%	417	40.4%	0	0.0%	269	26.1%	56	5.4%	17	1.6%	1032	1.6%
English	95	23.5%	287	71.0%	0	0.0%	17	4.2%	2	0.5%	3	0.7%	404	0.7%
Geography	53	17.0%	221	71.1%	0	0.0%	37	11.9%	0	0.0%	0	0.0%	311	0.0%
History	89	20.2%	325	73.7%	0	0.0%	23	5.2%	1	0.2%	3	0.7%	441	0.7%
History of Art	11	10.4%	88	83.0%	0	0.0%	6	5.7%	1	0.9%	0	0.0%	106	0.0%
Land Economy	17	9.6%	127	71.3%	0	0.0%	30	16.9%	3	1.7%	1	0.6%	178	0.6%
Law	104	13.3%	529	67.8%	0	0.0%	127	16.3%	16	2.1%	4	0.5%	780	0.5%
Linguistics	5	71.4%	2	28.6%	0	0.0%	0	0.0%	0	0.0%	0	0.0%	7	0.0%
Management Studies	15	17.2%	69	79.3%	0	0.0%	3	3.4%	0	0.0%	0	0.0%	87	0.0%
Manufacturing Engineering	11	21.6%	30	58.8%	0	0.0%	9	17.6%	1	2.0%	0	0.0%	51	0.0%
Mathematics	351	39.2%	339	37.9%	0	0.0%	118	13.2%	50	5.6%	37	4.1%	895	4.1%
Medical and Veterinary Science	104	14.9%	198	28.3%	292	41.7%	86	12.3%	16	2.3%	4	0.6%	700	0.6%
Modern and Medieval Languages	119	21.8%	389.5	71.3%	0	0.0%	32	5.9%	5.5	1.0%	0	0.0%	546	0.0%
Music	28	13.7%	142	69.6%	0	0.0%	33	16.2%	1	0.5%	0	0.0%	204	0.0%
Natural Sciences	602	25.5%	900	38.1%	435	18.4%	297	12.6%	103	4.4%	25	1.1%	2362	1.1%
Oriental Studies	8	16.7%	34	70.8%	0	0.0%	6	12.5%	0	0.0%	0	0.0%	48	0.0%
Philosophy	27	19.0%	99	69.7%	0	0.0%	15	10.6%	0	0.0%	1	0.7%	142	0.7%
Politics, Psychology, and Sociology	34	14.8%	176	76.5%	0	0.0%	17	7.4%	1	0.4%	2	0.9%	230	0.9%
Social and Political Sciences	31	29.2%	68	64.2%	0	0.0%	5	4.7%	2	1.9%	0	0.0%	106	0.0%
Theological and Religious Studies	30	16.0%	135	71.8%	0	0.0%	16	8.5%	2	1.1%	5	2.7%	188	2.7%
Theology for Ministry	4	18.2%	0	0.0%	18	81.8%	0	0.0%	0	0.0%	0	0.0%	22	0.0%
<b>Totals</b>	<b>2403</b>	<b>23%</b>	<b>5494.5</b>	<b>52%</b>	<b>817</b>	<b>8%</b>	<b>1457</b>	<b>14%</b>	<b>313.5</b>	<b>3%</b>	<b>125</b>	<b>1%</b>	<b>10610</b>	<b>1%</b>

This table excludes unclassified Preliminary examinations in Classics, Education, History, and the First Examination in Theology for Ministry (see Table 9a), and the Final M.B. and Final Vet. M.B. examinations (see Table 11).



## Men's and Women's results in all examinations, 2010

	Class I				Class II (1)				Class II				Class II (2)				Class III				Others				Total					
	Men		Women		Men		Women		Men		Women		Men		Women		Men		Women		Men		Women		Men		Women			
	No.	%	No.	%	No.	%	No.	%	No.	%	No.	%	No.	%	No.	%	No.	%	No.	%	No.	%	No.	%	No.	%	No.	%		
Anglo-Saxon, Norse, and Celtic	6	24.0%	8	20.5%	16	64.0%	28	71.8%	0	0.0%	3	12.0%	2	5.1%	0	0.0%	0	0.0%	0	0.0%	0	0.0%	0	0.0%	0	0.0%	25	39.1%	39	60.9%
Archaeology and Anthropology	15	24.2%	36	21.3%	41	66.1%	121	71.6%	0	0.0%	4	6.5%	10	5.9%	1	1.6%	1	0.6%	1	1.6%	1	0.6%	1	1.6%	2	26.8%	169	73.2%	63	52.9%
Architecture	6	10.7%	7	11.1%	33	58.9%	33	52.4%	0	0.0%	0	0.0%	22	34.9%	1	1.8%	1	1.8%	1	1.8%	2	3.6%	2	3.6%	0	0.0%	56	47.1%	63	52.9%
Asian and Middle Eastern Studies	15	36.6%	8	10.5%	17	41.5%	48	63.2%	0	0.0%	0	0.0%	20	26.3%	0	0.0%	0	0.0%	0	0.0%	2	4.9%	2	4.9%	0	0.0%	41	35.0%	76	65.0%
Chemical Engineering	33	30.3%	19	30.2%	47	43.1%	29	46.0%	0	0.0%	0	0.0%	19	17.4%	12	19.0%	8	7.3%	2	3.2%	2	1.8%	1	1.0%	109	63.4%	63	36.6%		
Classics	21	20.4%	27	16.9%	43	41.7%	75	46.9%	27	26.2%	45	10.7%	10	6.3%	1	1.0%	1	0.8%	0	0.0%	0	0.0%	0	0.0%	103	39.2%	160	60.8%		
Computer Science	32	18.4%	6	20.7%	6	20.7%	0	0.0%	0	0.0%	0	0.0%	14	44.8%	14	8.0%	2	6.3%	7	4.0%	7	4.0%	2	6.9%	174	85.7%	29	14.3%		
Economics	82	25.9%	49	26.3%	166	52.5%	76	40.9%	0	0.0%	0	0.0%	50	26.9%	10	3.2%	9	4.8%	0	0.0%	2	1.1%	316	62.9%	186	37.1%				
Education	4	26.7%	18	21.4%	8	53.3%	60	71.4%	0	0.0%	0	0.0%	2	13.3%	5	6.0%	0	0.0%	0	0.0%	0	0.0%	0	0.0%	15	15.2%	84	84.8%		
Engineering	237	29.6%	36	15.5%	323	40.4%	94	40.5%	0	0.0%	0	0.0%	191	23.9%	78	33.6%	37	4.6%	19	8.2%	12	1.5%	5	2.2%	800	77.5%	232	22.5%		
English	43	31.6%	52	19.4%	86	63.2%	201	75.0%	0	0.0%	0	0.0%	5	3.7%	12	4.5%	1	0.7%	1	0.4%	1	0.7%	2	0.7%	136	33.7%	268	66.3%		
Geography	26	20.6%	27	14.6%	81	64.3%	140	75.7%	0	0.0%	0	0.0%	19	15.1%	18	9.7%	0	0.0%	0	0.0%	0	0.0%	0	0.0%	126	40.5%	165	59.5%		
History	58	26.2%	31	14.1%	148	67.0%	177	80.5%	0	0.0%	0	0.0%	11	5.0%	12	5.5%	1	0.5%	0	0.0%	3	1.4%	0	0.0%	221	50.1%	220	49.9%		
History of Art	4	13.3%	7	9.2%	23	76.7%	65	85.5%	0	0.0%	0	0.0%	2	6.7%	4	5.3%	1	3.3%	0	0.0%	0	0.0%	0	0.0%	30	28.3%	76	71.7%		
Land Economy	7	7.1%	10	12.7%	68	68.7%	59	74.7%	0	0.0%	0	0.0%	22	22.2%	8	10.1%	2	2.0%	1	1.3%	0	0.0%	0	0.0%	99	55.6%	79	44.4%		
Law	55	16.5%	49	11.0%	227	68.2%	302	67.6%	0	0.0%	0	0.0%	45	13.5%	82	18.3%	4	1.2%	12	2.7%	2	0.6%	2	0.4%	333	42.7%	447	57.3%		
Linguistics	3	100.0%	2	50.0%	0	0.0%	2	50.0%	0	0.0%	0	0.0%	0	0.0%	0	0.0%	0	0.0%	0	0.0%	0	0.0%	0	0.0%	3	42.9%	4	57.1%		
Management Studies	8	16.0%	7	18.9%	42	84.0%	27	73.0%	0	0.0%	0	0.0%	6	22.2%	3	8.1%	0	0.0%	0	0.0%	0	0.0%	0	0.0%	50	57.5%	37	42.5%		
Manufacturing Engineering	5	18.5%	6	25.0%	15	55.6%	15	62.5%	0	0.0%	0	0.0%	0	0.0%	3	12.5%	1	3.7%	0	0.0%	0	0.0%	0	0.0%	27	52.9%	24	47.1%		
Mathematics	312	42.4%	39	24.5%	271	36.8%	68	42.8%	0	0.0%	0	0.0%	92	12.5%	26	16.4%	32	4.3%	18	11.3%	29	3.9%	8	5.0%	736	82.2%	159	17.8%		
Medical and Veterinary Science	48	15.1%	56	14.6%	83	26.2%	115	30.0%	136	42.9%	156	40.7%	40	12.6%	46	12.0%	9	2.8%	7	1.8%	1	0.3%	3	0.8%	317	45.3%	363	54.7%		
Modern and Medieval Languages	45	26.0%	74	19.3%	118	68.2%	271.5	72.8%	0	0.0%	0	0.0%	7.5	4.3%	24.5	6.6%	2.5	1.4%	3	0.8%	0	0.0%	0	0.0%	173	31.7%	373	68.3%		
Music	20	16.9%	8	9.3%	82	69.5%	60	69.8%	0	0.0%	0	0.0%	15	12.7%	18	20.9%	1	0.8%	0	0.0%	0	0.0%	0	0.0%	118	57.8%	86	42.2%		
Natural Sciences	414	30.5%	188	18.7%	456	33.6%	444	44.2%	244	18.0%	191	19.0%	170	12.5%	127	12.6%	61	4.5%	42	4.2%	13	1.0%	12	1.2%	1358	57.5%	1004	42.5%		
Philosophy	2	9.5%	6	22.2%	15	71.4%	19	70.4%	0	0.0%	0	0.0%	4	19.0%	2	7.4%	0	0.0%	0	0.0%	0	0.0%	0	0.0%	21	43.8%	27	56.3%		
Politics, Psychology, and Sociology	17	21.8%	10	15.6%	50	64.1%	49	76.6%	0	0.0%	0	0.0%	10	12.8%	5	7.8%	0	0.0%	0	0.0%	0	0.0%	1	1.3%	0	0.0%	78	54.9%	64	45.1%
Social and Political Sciences	10	12.2%	24	16.2%	64	78.0%	112	75.7%	0	0.0%	0	0.0%	6	7.3%	11	7.4%	1	1.2%	0	0.0%	1	1.2%	1	0.7%	82	35.7%	148	64.3%		
Theological and Religious Studies	12	35.3%	19	26.4%	20	58.8%	48	66.7%	0	0.0%	0	0.0%	1	2.9%	4	5.6%	1	2.9%	1	1.4%	0	0.0%	0	0.0%	34	32.1%	72	67.9%		
Theology for Ministry	15	19.0%	15	13.8%	55	69.6%	80	73.4%	0	0.0%	0	0.0%	4	5.1%	12	11.0%	0	0.0%	2	1.8%	5	6.3%	0	0.0%	79	42.0%	109	58.0%		
Totals	1,559	27.2%	844	17.3%	2,670	46.5%	2,824.5	58.0%	417	7.3%	400	8.2%	817.5	14.3%	639.5	13.1%	190.5	3.3%	123	2.5%	82	1.4%	43	0.9%	5,736	54.1%	4,874	45.9%		

This table excludes unclassified Preliminary examinations in Classics, Education, History, and the First Examination in Theology for Ministry (see Table 9a) and the Final M.B. and Final Vet. M.B. examinations (see Table 11).





## Undergraduate examination results by ethnic background, 2010 (all candidates)

	Class I		Class II Division (1)		Class II Undivided		Class II Division (2)		Class III		Other results		Total candidates	
	No.	%	No.	%	No.	%	No.	%	No.	%	No.	%	No.	%
White.	1634	22.1%	4000.5	54.1%	578	7.8%	927	12.5%	184.5	2.5%	70	0.9%	7394	69.7%
Asian or Asian British – Bangladeshi	2	7.7%	10	38.5%	3	11.5%	9	34.6%	2	7.7%	0	0.0%	26	0.2%
Asian or Asian British – Indian	65.5	20.2%	151.5	46.6%	33	10.2%	59	18.2%	11	3.4%	5	1.5%	325	3.1%
Asian or Asian British – Pakistani	4	8.3%	27	56.3%	4	8.3%	8	16.7%	2	4.2%	3	6.3%	48	0.5%
Chinese	144.5	26.8%	221	41.0%	26	4.8%	103.5	19.2%	30	5.6%	14	2.6%	539	5.1%
Other Asian background	37	18.1%	81	39.7%	19	9.3%	48	23.5%	13	6.4%	6	2.9%	204	1.9%
Black or Black British – African	4.5	6.4%	40.5	57.9%	5	7.1%	11	15.7%	7	10.0%	2	2.9%	70	0.7%
Black or Black British – Caribbean	1	6.7%	6	40.0%	1	6.7%	5	33.3%	2	13.3%	0	0.0%	15	0.1%
Other Black background	1	20.0%	1	20.0%	0	0.0%	2	40.0%	1	20.0%	0	0.0%	5	0.0%
Mixed – White and Asian	42	19.4%	123	56.9%	17	7.9%	27	12.5%	4	1.9%	3	1.4%	216	2.0%
Mixed – White and Black African	4	18.2%	11	50.0%	3	13.6%	1	4.5%	1	4.5%	2	9.1%	22	0.2%
Mixed – White and Black Caribbean	1	4.3%	11	47.8%	3	13.0%	6	26.1%	2	8.7%	0	0.0%	23	0.2%
Other Mixed background	26	24.1%	62	57.4%	3	2.8%	13	12.0%	4	3.7%	0	0.0%	108	1.0%
Other Ethnic background	7	11.1%	39	61.9%	4	6.3%	11	17.5%	1	1.6%	1	1.6%	63	0.6%
Information refused	422.5	27.6%	705	46.0%	116	7.6%	224.5	14.6%	49	3.2%	16	1.0%	1533	14.4%
Not known	7	36.8%	5	26.3%	2	10.5%	2	10.5%	0	0.0%	3	15.8%	19	0.2%
<b>Totals</b>	<b>2403</b>	<b>22.6%</b>	<b>5494.5</b>	<b>51.8%</b>	<b>817</b>	<b>7.7%</b>	<b>1457</b>	<b>13.7%</b>	<b>313.5</b>	<b>3.0%</b>	<b>125</b>	<b>1.2%</b>	<b>10610</b>	<b>100.0%</b>

This table excludes unclassified Preliminary examinations in Classics, Education, History, and the First Examination in Theology for Ministry (see Table 9a) and the Final M.B. and Final Vet. M.B. examinations (see Table 11).



## Undergraduate examination results by ethnic background, Michaelmas Term 2009 entrants

	Class I		Class II Division (1)		Class II Undivided		Class II Division (2)		Class III		Other results		Total candidates	
	No.	%	No.	%	No.	%	No.	%	No.	%	No.	%	No.	%
White	444	20.1%	845	38.3%	558	25.3%	243.5	11.0%	80.5	3.7%	34	1.5%	2,204	68.1%
Asian or Asian British – Bangladeshi	0	0.0%	3	30.0%	3	30.0%	3	30.0%	1	10.0%	0	0.0%	10	0.3%
Asian or Asian British – Indian	18.5	20.6%	19.5	21.7%	33	36.7%	14	15.6%	4	4.4%	1	1.1%	90	2.8%
Asian or Asian British – Pakistani	0	0.0%	6	35.3%	4	23.5%	4	23.5%	1	5.9%	2	11.8%	17	0.5%
Chinese	29.5	27.3%	30	27.8%	26	24.1%	13.5	12.5%	2	1.9%	7	6.5%	108	3.3%
Other Asian background	9	14.8%	14	23.0%	19	31.1%	11	18.0%	5	8.2%	3	4.9%	61	1.9%
Black or Black British – African	1.5	6.3%	14.5	60.4%	4	16.7%	2	8.3%	1	4.2%	1	4.2%	24	0.7%
Black or Black British – Caribbean	1	25.0%	3	75.0%	0	0.0%	0	0.0%	0	0.0%	0	0.0%	4	0.1%
Other Black background	0	0.0%	0	0.0%	0	0.0%	1	50.0%	1	50.0%	0	0.0%	2	0.1%
Mixed – White and Asian	14	20.6%	25	36.8%	17	25.0%	9	13.2%	2	2.9%	1	1.5%	68	2.1%
Mixed – White and Black African	1	14.3%	2	28.6%	2	28.6%	1	14.3%	1	14.3%	0	0.0%	7	0.2%
Mixed – White and Black Caribbean	0	0.0%	1	20.0%	3	60.0%	1	20.0%	0	0.0%	0	0.0%	5	0.2%
Other Mixed background	10	31.3%	14	43.8%	3	9.4%	3	9.4%	2	6.3%	0	0.0%	32	1.0%
Other Ethnic background	2	11.8%	9	52.9%	4	23.5%	1	5.9%	1	5.9%	0	0.0%	17	0.5%
Information refused	166.5	28.6%	182	31.2%	113	19.4%	93.5	16.0%	20	3.4%	8	1.4%	583	18.0%
Not known	1	25.0%	0	0.0%	0	0.0%	0	0.0%	0	0.0%	3	75.0%	4	0.1%
<b>Totals</b>	<b>697.5</b>	<b>21.6%</b>	<b>1,167.5</b>	<b>36.1%</b>	<b>789</b>	<b>24.4%</b>	<b>400.5</b>	<b>12.4%</b>	<b>121.5</b>	<b>3.8%</b>	<b>60</b>	<b>1.9%</b>	<b>3,236</b>	<b>100.0%</b>

This table excludes unclassified Preliminary examinations in Classics, Education, History, and the First Examination in Theology for Ministry (see Table 9a) and the Final M.B. and Final Vet. M.B. examinations (see Table 11).



## Undergraduate examination results by ethnic background, Michaelmas Term 2008 entrants

	Class I		Class II Division (1)		Class II Undivided		Class II Division (2)		Class III		Other results		Total candidates	
	No.	%	No.	%	No.	%	No.	%	No.	%	No.	%	No.	%
White	433.5	18.3%	1449.5	61.1%	19	0.8%	400	16.9%	54	2.3%	17	0.7%	2,373.0	70.4%
Asian or Asian British – Bangladeshi	1	12.5%	5	62.5%	0	0.0%	1	12.5%	1	12.5%	0	0.0%	8	0.2%
Asian or Asian British – Indian	21	16.7%	74	58.7%	0	0.0%	27	21.4%	3	2.4%	1	0.8%	126	3.7%
Asian or Asian British – Pakistani	2	13.3%	10	66.7%	0	0.0%	2	13.3%	1	6.7%	0	0.0%	15	0.4%
Chinese	33	21.9%	66	43.7%	0	0.0%	33	21.9%	15	9.9%	4	2.6%	151	4.5%
Other Asian background	9	17.6%	22	43.1%	0	0.0%	16	31.4%	4	7.8%	0	0.0%	51	1.5%
Black or Black British – African	0	0.0%	10	47.6%	1	4.8%	6	28.6%	3	14.3%	1	4.8%	21	0.6%
Black or Black British – Caribbean	0	0.0%	1	14.3%	1	14.3%	4	57.1%	1	14.3%	0	0.0%	7	0.2%
Other Black background	0	0.0%	0	0.0%	0	0.0%	0	0.0%	0	0.0%	0	0.0%	0	0.0%
Mixed – White and Asian	11	15.3%	47	65.3%	0	0.0%	12	16.7%	2	2.8%	0	0.0%	72	2.1%
Mixed – White and Black African	2	28.6%	4	57.1%	0	0.0%	0	0.0%	0	0.0%	1	14.3%	7	0.2%
Mixed – White and Black Caribbean	0	0.0%	5	50.0%	0	0.0%	4	40.0%	1	10.0%	0	0.0%	10	0.3%
Other Mixed background	7	21.2%	18	54.5%	0	0.0%	6	18.2%	2	6.1%	0	0.0%	33	1.0%
Other Ethnic background	2	12.5%	10	62.5%	0	0.0%	4	25.0%	0	0.0%	0	0.0%	16	0.5%
Information refused	131	27.3%	255	53.2%	3	0.6%	68	14.2%	19	4.0%	3	0.6%	479	14.2%
Not known	0	0.0%	0	0.0%	1	100.0%	0	0.0%	0	0.0%	0	0.0%	1	0.0%
<b>Totals</b>	<b>652.5</b>	<b>19.4%</b>	<b>1,977</b>	<b>58.6%</b>	<b>25</b>	<b>0.7%</b>	<b>583</b>	<b>17.3%</b>	<b>106</b>	<b>3.1%</b>	<b>27</b>	<b>0.8%</b>	<b>3,370.0</b>	<b>100.0%</b>

This table excludes unclassified Preliminary examinations in Classics, Education, History, and the First Examination in Theology for Ministry (see Table 9a) and the Final M.B. and Final Vet. M.B. examinations (see Table 11).



## Undergraduate examination results by ethnic background, Michaelmas Term 2007 entrants

	Class I		Class II Division (1)		Class II Undivided		Class II Division (2)		Class III		Other results		Total candidates	
	No.	%	No.	%	No.	%	No.	%	No.	%	No.	%	No.	%
White	510	24.3%	1,340.5	63.9%	1	0.0%	200.5	9.6%	35	1.7%	12	0.6%	2,099	72.1%
Asian or Asian British – Bangladeshi	1	16.7%	2	33.3%	0	0.0%	3	50.0%	0	0.0%	0	0.0%	6	0.2%
Asian or Asian British – Indian	17	20.0%	46	54.1%	0	0.0%	16	18.8%	4	4.7%	2	2.4%	85	2.9%
Asian or Asian British – Pakistani	2	15.4%	9	69.2%	0	0.0%	1	7.7%	0	0.0%	1	7.7%	13	0.4%
Chinese	60	29.7%	93	46.0%	0	0.0%	37	18.3%	11	5.4%	1	0.5%	202	6.9%
Other Asian background	12	17.1%	38	54.3%	0	0.0%	15	21.4%	3	4.3%	2	2.9%	70	2.4%
Black or Black British – African	3	15.0%	14	70.0%	0	0.0%	2	10.0%	1	5.0%	0	0.0%	20	0.7%
Black or Black British – Caribbean	0	0.0%	2	50.0%	0	0.0%	1	25.0%	1	25.0%	0	0.0%	4	0.1%
Other Black background	1	100.0%	0	0.0%	0	0.0%	0	0.0%	0	0.0%	0	0.0%	1	0.0%
Mixed – White and Asian	11	19.0%	42	72.4%	0	0.0%	4	6.9%	0	0.0%	1	1.7%	58	2.0%
Mixed – White and Black African	0	0.0%	4	100.0%	0	0.0%	0	0.0%	0	0.0%	0	0.0%	4	0.1%
Mixed – White and Black Caribbean	0	0.0%	4	80.0%	0	0.0%	0	0.0%	1	20.0%	0	0.0%	5	0.2%
Other Mixed background	7	20.6%	23	67.6%	0	0.0%	4	11.8%	0	0.0%	0	0.0%	34	1.2%
Other Ethnic background	2	7.7%	19	73.1%	0	0.0%	5	19.2%	0	0.0%	0	0.0%	26	0.9%
Information refused	76	28.1%	142	52.6%	0	0.0%	41	15.2%	7	2.6%	4	1.5%	270	9.3%
Not known	6	46.2%	5	38.5%	0	0.0%	2	15.4%	0	0.0%	0	0.0%	13	0.4%
<b>Totals</b>	<b>708</b>	<b>24.3%</b>	<b>1,783.5</b>	<b>61.3%</b>	<b>1</b>	<b>0.0%</b>	<b>331.5</b>	<b>11.4%</b>	<b>63</b>	<b>2.2%</b>	<b>23</b>	<b>0.8%</b>	<b>2,910</b>	<b>100.0%</b>

This table excludes unclassified Preliminary examinations in Classics, Education, History, and the First Examination in Theology for Ministry (see Table 9a) and the Final M.B. and Final Vet. M.B. examinations (see Table 11).





## Undergraduate examination results by ethnic background, Michaelmas Term 2006 entrants

	Class I		Class II Division (1)		Class II Undivided		Class II Division (2)		Class III		Total candidates	
	No.	%	No.	%	No.	%	No.	%	No.	%	No.	%
White	240	35.5%	346	51.2%	0	0.0%	74	10.9%	11	1.6%	676	65.2%
Asian or Asian British – Bangladeshi	0	0.0%	0	0.0%	0	0.0%	2	100.0%	0	0.0%	2	0.2%
Asian or Asian British – Indian	9	39.1%	11	47.8%	0	0.0%	2	8.7%	0	0.0%	23	2.2%
Asian or Asian British – Pakistani	0	0.0%	2	100.0%	0	0.0%	0	0.0%	0	0.0%	2	0.2%
Chinese	22	29.7%	30	40.5%	0	0.0%	19	25.7%	2	2.7%	74	7.1%
Other Asian background	7	31.8%	7	31.8%	0	0.0%	6	27.3%	1	4.5%	22	2.1%
Black or Black British – African	0	0.0%	2	40.0%	0	0.0%	1	20.0%	2	40.0%	5	0.5%
Black or Black British – Caribbean	0	0.0%	0	0.0%	0	0.0%	0	0.0%	0	0.0%	0	0.0%
Other Black background	0	0.0%	1	50.0%	0	0.0%	1	50.0%	0	0.0%	2	0.2%
Mixed – White and Asian	6	35.3%	8	47.1%	0	0.0%	2	11.8%	0	0.0%	17	1.6%
Mixed – White and Black African	0	0.0%	1	50.0%	0	0.0%	0	0.0%	0	0.0%	2	0.2%
Mixed – White and Black Caribbean	1	33.3%	1	33.3%	0	0.0%	1	33.3%	0	0.0%	3	0.3%
Other Mixed background	2	22.2%	7	77.8%	0	0.0%	0	0.0%	0	0.0%	9	0.9%
Other Ethnic background	1	25.0%	1	25.0%	0	0.0%	1	25.0%	0	0.0%	4	0.4%
Information refused	48	24.6%	123	63.1%	0	0.0%	20	10.3%	3	1.5%	195	18.8%
Not known	0	0.0%	0	0.0%	1	100.0%	0	0.0%	0	0.0%	1	0.1%
<b>Totals</b>	<b>336</b>	<b>32.4%</b>	<b>540.0</b>	<b>52.1%</b>	<b>1</b>	<b>0.1%</b>	<b>129</b>	<b>12.4%</b>	<b>19</b>	<b>1.8%</b>	<b>1,037</b>	<b>100.0%</b>

This table excludes unclassified Preliminary examinations in Classics, Education, History, and the First Examination in Theology for Ministry (see Table 9a) and the Final M.B. and Final Vet. M.B. examinations (see Table 11).



## Undergraduate examination results by disability, 2010 (All candidates)

	Class I		Class II Division (1)		Class II Undivided		Class II Division (2)		Class III		Other results		Total candidates	
	No.	%	No.	%	No.	%	No.	%	No.	%	No.	%	No.	%
No disability	2286	22.9%	5,162	51.7%	784	7.8%	1363	13.6%	288.5	2.9%	107	1.1%	9990	94.2%
A specific learning difficulty e.g. dyslexia	44	17.4%	134	53.0%	18	7.1%	44	17.4%	8	3.2%	5	2.0%	253	2.4%
Blind/are partially sighted	5.5	32.4%	4.5	26.5%	2	11.8%	4	23.5%	1	5.9%	0	0.0%	17	0.2%
Deaf/have a hearing impairment	5	20.0%	16	64.0%	0	0.0%	4	16.0%	0	0.0%	0	0.0%	25	0.2%
Wheelchair user/have mobility difficulties	2	11.8%	12	70.6%	1	5.9%	1	5.9%	1	5.9%	0	0.0%	17	0.2%
Mental health difficulties	3	10.0%	18	60.0%	2	6.7%	5	16.7%	2	6.7%	0	0.0%	30	0.3%
An unseen disability, e.g. diabetes, epilepsy, asthma	16	18.0%	49	55.1%	6	6.7%	12	13.5%	5	5.6%	1	1.1%	89	0.8%
Autistic Spectrum Disorder	7.5	30.0%	9.5	38.0%	0	0.0%	5	20.0%	2	8.0%	1	4.0%	25	0.2%
Multiple disabilities	4	21.1%	10	52.6%	1	5.3%	2	10.5%	1	5.3%	1	5.3%	19	0.2%
A disability not listed above	11	22.4%	29	59.2%	0	0.0%	5	10.2%	3	6.1%	1	2.0%	49	0.5%
Information not sought	1	100.0%	0	0.0%	0	0.0%	0	0.0%	0	0.0%	0	0.0%	1	0.0%
Information refused	3	9.4%	21	65.6%	0	0.0%	6	18.8%	1	3.1%	1	3.1%	32	0.3%
Not known	15	23.8%	30	47.6%	3	4.8%	6	9.5%	1	1.6%	8	12.7%	63	0.6%
<b>Totals</b>	<b>2403</b>	<b>22.6%</b>	<b>5494.5</b>	<b>51.8%</b>	<b>817</b>	<b>7.7%</b>	<b>1457</b>	<b>13.7%</b>	<b>313.5</b>	<b>3.0%</b>	<b>125</b>	<b>1.2%</b>	<b>10610</b>	<b>100.0%</b>

This table excludes unclassified Preliminary examinations in Classics, Education, History, and the First Examination in Theology for Ministry and the Final M.B. and Final Vet. M.B. examinations.



## Undergraduate examination results by disability, Michaelmas Term 2009 entrants

	Class I		Class II Division (1)		Class II Undivided		Class II Division (2)		Class III		Other results		Total candidates	
	No.	%	No.	%	No.	%	No.	%	No.	%	No.	%	No.	%
No disability	665	21.6%	1104.5	35.9%	763	24.8%	377	12.2%	118.5	3.9%	49	1.6%	3,076	95.1%
A specific learning difficulty e.g. dyslexia	12	17.9%	25	37.3%	16	23.9%	10	14.9%	1	1.5%	3	4.5%	67	2.1%
Blind/are partially sighted	2.5	27.8%	2	16.7%	2	22.2%	2	22.2%	1	11.1%	0	0.0%	9	0.3%
Deaf/have a hearing impairment	1	50.0%	1	50.0%	0	0.0%	0	0.0%	0	0.0%	0	0.0%	2	0.1%
Wheelchair user/have mobility difficulties	0	0.0%	4.0	66.7%	1	16.7%	1	16.7%	0	0.0%	0	0.0%	6	0.2%
Mental health difficulties	0	0.0%	6	60.0%	2	20.0%	2	20.0%	0	0.0%	0	0.0%	10	0.3%
An unseen disability, e.g. diabetes, epilepsy, asthma	3	15.8%	8	42.1%	4	21.1%	4	21.1%	0	0.0%	0	0.0%	19	0.6%
Autistic Spectrum Disorder	5.5	42.3%	5	34.6%	0	0.0%	3	23.1%	0	0.0%	0	0.0%	13	0.4%
Multiple disabilities	2	66.7%	0	0.0%	1	33.3%	0	0.0%	0	0.0%	0	0.0%	3	0.1%
A disability not listed above	6	54.5%	3	27.3%	0	0.0%	1	9.1%	1	9.1%	0	0.0%	11	0.3%
Information not sought	0	0.0%	0	0.0%	0	0.0%	0	0.0%	0	0.0%	0	0.0%	0	0.0%
Information refused	0	0.0%	6	85.7%	0	0.0%	1	14.3%	0	0.0%	0	0.0%	7	0.2%
Not known	1	7.7%	4	30.8%	0	0.0%	0	0.0%	0	0.0%	8	61.5%	13	0.4%
<b>Totals</b>	<b>697.5</b>	<b>21.6%</b>	<b>1,167.5</b>	<b>36.1%</b>	<b>789</b>	<b>24.4%</b>	<b>401</b>	<b>12.4%</b>	<b>121.5</b>	<b>3.8%</b>	<b>60</b>	<b>1.9%</b>	<b>3,236</b>	<b>100.0%</b>

This table excludes unclassified Preliminary examinations in Classics, Education, History, and the First Examination in Theology for Ministry and the Final M.B. and Final Vet. M.B. examinations.



## Undergraduate examination results by disability, Michaelmas Term 2008 entrants

	Class I		Class II Division (1)		Class II Undivided		Class II Division (2)		Class III		Other results		Total candidates	
	No.	%	No.	%	No.	%	No.	%	No.	%	No.	%	No.	%
No disability	626.5	19.7%	1,861.5	58.6%	20	0.6%	551	17.3%	96	3.0%	23	0.7%	3178.0	94.3%
A specific learning difficulty e.g. dyslexia	11	13.6%	46	56.8%	2	2.5%	18	22.2%	3	3.7%	1	1.2%	81	2.4%
Blind/are partially sighted	2	33.3%	2	33.3%	0	0.0%	2	33.3%	0	0.0%	0	0.0%	6	0.2%
Deaf/have a hearing impairment	2	22.2%	6	66.7%	0	0.0%	1	11.1%	0	0.0%	0	0.0%	9	0.3%
Wheelchair user/have mobility difficulties	1	33.3%	2	66.7%	0	0.0%	0	0.0%	0	0.0%	0	0.0%	3	0.1%
Mental health difficulties	1	25.0%	3	75.0%	0	0.0%	0	0.0%	0	0.0%	0	0.0%	4	0.1%
An unseen disability, e.g. diabetes, epilepsy, asthma	6	15.0%	24	60.0%	1	2.5%	6	15.0%	3	7.5%	0	0.0%	40	1.2%
Autistic Spectrum Disorder	0	0.0%	4	66.7%	0	0.0%	0	0.0%	2	33.3%	0	0.0%	6	0.2%
Multiple disabilities	1	11.1%	6	66.7%	0	0.0%	1	11.1%	0	0.0%	1	11.1%	9	0.3%
A disability not listed above	2	10.5%	13	68.4%	0	0.0%	2	10.5%	1	5.3%	1	5.3%	19	0.6%
Information not sought	0	0.0%	0	0.0%	0	0.0%	0	0.0%	0	0.0%	0	0.0%	0	0.0%
Information refused	0	0.0%	5	71.4%	0	0.0%	0	0.0%	1	14.3%	1	14.3%	7	0.2%
Not known	0	0.0%	4	50.0%	2	25.0%	2	25.0%	0	0.0%	0	0.0%	8	0.2%
<b>Totals</b>	<b>652.5</b>	<b>19.4%</b>	<b>1,976.5</b>	<b>58.6%</b>	<b>25</b>	<b>0.7%</b>	<b>583</b>	<b>17.3%</b>	<b>106</b>	<b>3.1%</b>	<b>27</b>	<b>0.8%</b>	<b>3,370</b>	<b>100.0%</b>

This table excludes unclassified Preliminary examinations in Classics, Education, History, and the First Examination in Theology for Ministry and the Final M.B. and Final Vet. M.B. examinations.





## Undergraduate examination results by disability, Michaelmas Term 2007 entrants

	Class I		Class II Division (1)		Class II Undivided		Class II Division (2)		Class III		Other results		Total candidates	
	No.	%	No.	%	No.	%	No.	%	No.	%	No.	%	No.	%
No disability	680	24.5%	1,695.5	61.2%	1	0.0%	314.5	11.4%	57	2.1%	22	0.8%	2,770	95.2%
A specific learning difficulty e.g. dyslexia	18	22.8%	49	62.0%	0	0.0%	8	10.1%	4	5.1%	0	0.0%	79	2.7%
Blind/are partially sighted	1	100.0%	0	0.0%	0	0.0%	0	0.0%	0	0.0%	0	0.0%	1	0.0%
Deaf/have a hearing impairment	1	11.1%	7	77.8%	0	0.0%	1	11.1%	0	0.0%	0	0.0%	9	0.3%
Wheelchair user/have mobility difficulties	1	20.0%	3	60.0%	0	0.0%	0	0.0%	1	20.0%	0	0.0%	5	0.2%
Mental health difficulties	1	25.0%	2	50.0%	0	0.0%	1	25.0%	0	0.0%	0	0.0%	4	0.1%
An unseens disability, e.g. diabetes, epilepsy, asthma	2	16.7%	7	58.3%	0	0.0%	1	8.3%	1	8.3%	1	8.3%	12	0.4%
Autistic Spectrum Disorder	1	33.3%	1	33.3%	0	0.0%	1	33.3%	0	0.0%	0	0.0%	3	0.1%
Multiple disabilities	0	0.0%	3	75.0%	0	0.0%	1	25.0%	0	0.0%	0	0.0%	4	0.1%
A disability not listed above	2	18.2%	8	72.7%	0	0.0%	1	9.1%	0	0.0%	0	0.0%	11	0.4%
Information not sought	0	0.0%	0	0.0%	0	0.0%	0	0.0%	0	0.0%	0	0.0%	0	0.0%
Information refused	1	10.0%	6	60.0%	0	0.0%	3	30.0%	0	0.0%	0	0.0%	10	0.3%
Not known	0	0.0%	2	100.0%	0	0.0%	0	0.0%	0	0.0%	0	0.0%	2	0.1%
<b>Totals</b>	<b>708</b>	<b>24.3%</b>	<b>1,783.5</b>	<b>61.3%</b>	<b>1</b>	<b>0.0%</b>	<b>331.5</b>	<b>11.4%</b>	<b>63</b>	<b>2.2%</b>	<b>23</b>	<b>0.8%</b>	<b>2,910</b>	<b>100.0%</b>

This table excludes unclassified Preliminary examinations in Classics, Education, History, and the First Examination in Theology for Ministry and the Final M.B. and Final Vet. M.B. examinations.



## Undergraduate examination results by disability, Michaelmas Term 2006 entrants

	Class I		Class II Division (1)		Class II Undivided		Class II Division (2)		Class III		Other results		Total candidates	
	No.	%	No.	%	No.	%	No.	%	No.	%	No.	%	No.	%
No disability	310	33.5%	477	51.5%	0	0.0%	112	12.1%	16	1.7%	11	1.2%	926	89.3%
A specific learning difficulty e.g. dyslexia	3	12.5%	14	58.3%	0	0.0%	7	29.2%	0	0.0%	0	0.0%	24	2.3%
Blind/are partially sighted	0	0.0%	1	100.0%	0	0.0%	0	0.0%	0	0.0%	0	0.0%	1	0.1%
Deaf/have a hearing impairment	1	20.0%	2	40.0%	0	0.0%	2	40.0%	0	0.0%	0	0.0%	5	0.5%
Wheelchair user/have mobility difficulties	0	0.0%	2	100.0%	0	0.0%	0	0.0%	0	0.0%	0	0.0%	2	0.2%
Mental health difficulties	0	0.0%	6	66.7%	0	0.0%	1	11.1%	2	22.2%	0	0.0%	9	0.9%
An unseen disability, e.g. diabetes, epilepsy, asthma	4	28.6%	9	64.3%	0	0.0%	1	7.1%	0	0.0%	0	0.0%	14	1.4%
Autistic Spectrum Disorder	0	0.0%	0	0.0%	0	0.0%	0	0.0%	0	0.0%	1	100.0%	1	0.1%
Multiple disabilities	1	50.0%	1	50.0%	0	0.0%	0	0.0%	0	0.0%	0	0.0%	2	0.2%
A disability not listed above	1	14.3%	5	71.4%	0	0.0%	1	14.3%	0	0.0%	0	0.0%	7	0.7%
Information not sought	1	100.0%	0	0.0%	0	0.0%	0	0.0%	0	0.0%	0	0.0%	1	0.1%
Information refused	2	28.6%	4	57.1%	0	0.0%	1	14.3%	0	0.0%	0	0.0%	7	0.7%
Not known	13	34.2%	19	50.0%	1	2.6%	4	10.5%	1	2.6%	0	0.0%	38	3.7%
<b>Totals</b>	<b>336</b>	<b>32.4%</b>	<b>540</b>	<b>52.1%</b>	<b>1</b>	<b>0.1%</b>	<b>129</b>	<b>12.4%</b>	<b>19</b>	<b>1.8%</b>	<b>12</b>	<b>1.2%</b>	<b>1,037</b>	<b>100.0%</b>

This table excludes unclassified Preliminary examinations in Classics, Education, History, and the First Examination in Theology for Ministry and the Final M.B. and Final Vet. M.B. examinations.



## Final M.B. and Final Vet. M.B. Examination Results 2009–10

	Pass with Distinction				Pass				Others				Total			
	Men		Women		Men		Women		Men		Women		Men		Women	
	No.	%	No.	%	No.	%	No.	%	No.	%	No.	%	No.	%	No.	%
Final M.B. Examination Part I, Pathology	9	10.3%	9	11.7%	71	81.6%	67	87.0%	7	8.0%	1	1.3%	87	53.0%	77	47.0%
Final M.B. Examination Part II, Clinical Paediatrics, Obstetrics and Gynaecology	0	0.0%	0	0.0%	89	100.0%	76	100.0%	0	0.0%	0	0.0%	89	53.9%	76	46.1%
Final M.B. Examination Part III, Clinical examination	8	15.1%	14	14.7%	42	79.2%	78	82.1%	3	5.7%	3	3.2%	53	35.8%	95	64.2%
Final Veterinary Examination, Part I	1	6.7%	2	4.4%	14	93.3%	43	95.6%	0	0.0%	0	0.0%	15	25.0%	45	75.0%
Final Veterinary Examination, Part II	2	11.8%	9	18.4%	15	88.2%	39	79.6%	0	0.0%	1	2.0%	17	25.8%	49	74.2%
Final Veterinary Examination, Part III	0	0.0%	0	0.0%	20	100.0%	45	100.0%	0	0.0%	0	0.0%	20	30.8%	45	69.2%
<b>Totals</b>	<b>20</b>	<b>7.1%</b>	<b>34</b>	<b>8.8%</b>	<b>251</b>	<b>89.3%</b>	<b>348</b>	<b>89.9%</b>	<b>10</b>	<b>3.6%</b>	<b>5</b>	<b>1.3%</b>	<b>281</b>	<b>42.1%</b>	<b>387</b>	<b>57.9%</b>



## Students deemed to have obtained honours whilst studying abroad, 2010

Chemical Engineering student at M.I.T.	3
Economics student at M.I.T.	2
Engineering student at M.I.T.	9
Law student at Paris II (Fourth year)	12
Mathematical student at M.I.T.	1
Natural Sciences student at M.I.T.	13
<b>Total</b>	<b>40</b>

This table gives the results for students who have spent the year studying at the Massachusetts Institute of Technology or studying in Paris as part of the Double Maîtrise.





## Tripos examination results by college, 2010

	Class I		Class II Division (1)		Class II Undivided		Class II Division (2)		Class III		Other results		Total candidates	
	No.	%	No.	%	No.	%	No.	%	No.	%	No.	%	No.	%
Christ's College	87	22.8%	207	54.3%	28	7.3%	43	11.3%	10	2.6%	6	1.6%	381	
Churchill College	138.5	30.4%	215	47.3%	36	7.9%	48.5	10.7%	13	2.9%	4	0.9%	455	
Clare College	99	23.8%	219.5	52.8%	42	10.1%	42.5	10.2%	8	1.9%	5	1.2%	416	
Clare Hall	0	0.0%	1	50.0%	0	0.0%	0	0.0%	0	0.0%	1	50.0%	2	
Corpus Christi College	52	22.2%	135	57.7%	17	7.3%	23	9.8%	7	3.0%	0	0.0%	234	
Darwin College	0	0.0%	1	100.0%	0	0.0%	0	0.0%	0	0.0%	0	0.0%	1	
Downing College	73.5	19.7%	198.5	53.2%	39	10.5%	46	12.3%	15	4.0%	1	0.3%	373	
Emmanuel College	147.5	33.9%	207.5	47.7%	29	6.7%	45	10.3%	3	0.7%	3	0.7%	435	
Fitzwilliam College	71.5	17.0%	213.5	50.7%	37	8.8%	79	18.8%	15	3.6%	5	1.2%	421	
Girton College	80	17.2%	253.5	54.5%	36	7.7%	72	15.5%	17.5	3.8%	6	1.3%	465	
Gonville and Caius College	116	24.8%	228.5	48.8%	36	7.7%	68.5	14.6%	14	3.0%	5	1.1%	468	
Homerton College	76	14.8%	270	52.4%	30	5.8%	105	20.4%	23	4.5%	11	2.1%	515	
Hughes Hall	15	19.2%	37	47.4%	1	1.3%	17	21.8%	5	6.4%	3	3.8%	78	
Jesus College	90	20.1%	244.5	54.7%	34	7.6%	59.5	13.3%	16	3.6%	3	0.7%	447	
King's College	89.5	23.8%	195.5	52.0%	21	5.6%	54	14.4%	9	2.4%	7	1.9%	376	
Lucy Cavendish College	9	11.4%	30	38.0%	3	3.8%	24.5	31.0%	7.5	9.5%	5	6.3%	79	
Magdalene College	78	24.2%	164	50.9%	29	9.0%	43	13.4%	5	1.6%	3	0.9%	322	
New Hall	44.5	14.1%	176.5	56.0%	36	11.4%	49	15.6%	8	2.5%	1	0.3%	315	
Newnham College	46.5	13.6%	192.5	56.3%	36	10.5%	52	15.2%	10	2.9%	5	1.5%	342	
Pembroke College	98	24.9%	199	50.5%	30	7.6%	55	14.0%	9	2.3%	3	0.8%	394	
Peterhouse	61.5	27.2%	96.5	42.7%	21	9.3%	29	12.8%	11	4.9%	7	3.1%	226	
Queens' College	110.5	23.0%	228.5	47.5%	35	7.3%	84	17.5%	19	4.0%	4	0.8%	481	
Robinson College	67	18.7%	180.5	50.3%	37	10.3%	62.5	17.4%	8	2.2%	4	1.1%	359	
Selwyn College	84.5	24.0%	195.5	55.5%	23	6.5%	38	10.8%	8	2.3%	3	0.9%	352	
Sidney Sussex College	68	20.7%	171.5	52.3%	23	7.0%	53.5	16.3%	8	2.4%	4	1.2%	328	
St Catharine's College	96.5	23.7%	225	55.3%	27	6.6%	44.5	10.9%	10	2.5%	4	1.0%	407	
St Edmund's College	12	9.7%	60	48.4%	11	8.9%	24	19.4%	12	9.7%	5	4.0%	124	
St John's College	115.5	21.6%	286	53.5%	42	7.9%	72	13.5%	14.5	2.7%	5	0.9%	535	
Trinity College	230.5	35.3%	296.5	45.4%	34	5.2%	67	10.3%	20	3.1%	5	0.8%	653	
Trinity Hall	91.5	26.4%	193.5	55.8%	24	6.9%	30	8.6%	4	1.2%	4	1.2%	347	
Wolfson College	8	12.3%	39	60.0%	2	3.1%	11	16.9%	2	3.1%	3	4.6%	65	
<b>Totals</b>	<b>2,357</b>	<b>22.7%</b>	<b>5,361.5</b>	<b>51.6%</b>	<b>799</b>	<b>7.7%</b>	<b>1,442</b>	<b>13.9%</b>	<b>311.5</b>	<b>3.0%</b>	<b>125</b>	<b>1.2%</b>	<b>10,396</b>	



## Men's and Women's Tripos examination results by college, 2010

	Class I						Class II (1)						Class II (2)						Class III						Others						Total							
	Men			Women			Men			Women			Men			Women			Men			Women			Men			Women			Men			Women				
	No.	%		No.	%		No.	%		No.	%		No.	%		No.	%		No.	%		No.	%		No.	%		No.	%		No.	%		No.	%		No.	%
Christ's College	63	27.6%	24	15.7%	114	50.0%	93	60.8%	15	6.6%	28	12.3%	15	9.8%	7	4.6%	5	2.2%	1	0.7%	5	2.2%	3	1.3%	7	4.6%	5	2.2%	3	1.3%	15	9.8%	228	59.8%	153	40.2%		
Churchill College	100.5	33.2%	38	25.0%	132.5	43.7%	82.5	54.3%	22	7.3%	35	11.6%	13.5	8.9%	4	2.6%	4	1.3%	0	0.0%	4	1.3%	0	0.0%	4	2.6%	3	1.3%	0	0.0%	303	66.6%	187	33.4%				
Clare College	62.5	27.3%	36.5	19.5%	105.5	46.1%	114	61.0%	24	10.5%	18	9.6%	27	11.8%	15.5	8.3%	7	3.1%	2	1.1%	229	55.0%	182	45.0%	0	0.0%	0	0.0%	1	50.0%	0	0.0%	2	100.0%	0	0.0%		
Clare Hall	0	0.0%	0	0.0%	1	50.0%	0	0.0%	0	0.0%	0	0.0%	0	0.0%	0	0.0%	0	0.0%	0	0.0%	0	0.0%	0	0.0%	0	0.0%	0	0.0%	0	0.0%	0	0.0%	136	58.1%	98	41.9%		
Corpus Christi College	32	23.5%	20	20.4%	75	55.1%	60	61.2%	11	8.1%	6	6.1%	13	9.6%	10	10.2%	5	3.7%	2	2.0%	0	0.0%	0	0.0%	0	0.0%	0	0.0%	0	0.0%	0	0.0%	1	100.0%	0	0.0%		
Darwin College	0	0.0%	0	0.0%	1	100.0%	0	0.0%	0	0.0%	0	0.0%	0	0.0%	0	0.0%	0	0.0%	0	0.0%	0	0.0%	0	0.0%	0	0.0%	0	0.0%	0	0.0%	0	0.0%	0	0.0%	0	0.0%		
Downing College	53	24.9%	20.5	12.8%	96	45.1%	102.5	64.1%	21	9.9%	18	11.3%	30	14.1%	16	10.0%	13	6.1%	2	1.3%	0	0.0%	1	0.6%	2	1.3%	0	0.0%	1	0.6%	213	57.1%	160	42.9%				
Emmanuel College	94	37.5%	53.5	29.1%	102	40.6%	105.5	57.3%	24	9.6%	5	2.7%	27	20.8%	18	9.8%	2	0.8%	2	1.5%	2	0.8%	1	0.5%	3	1.9%	2	1.5%	251	57.7%	184	42.3%						
Fitzwilliam College	56	21.0%	15.5	10.1%	118	44.2%	95.5	62.0%	22	8.2%	15	9.7%	55	20.6%	24	15.6%	12	4.5%	4	1.5%	4	1.5%	4	1.5%	7	3.5%	4	1.5%	266	57.2%	199	42.8%						
Girton College	56	21.1%	24	12.1%	130	48.9%	123.5	62.1%	19	7.1%	17	8.5%	46.5	17.5%	25.5	12.8%	10.5	3.9%	4	1.5%	4	1.5%	7	3.5%	4	1.5%	266	57.2%	199	42.8%								
Gonville and Caius College	81	30.0%	29	12.3%	112.5	41.7%	148	62.7%	20	7.2%	10	4.2%	63	22.6%	42	17.8%	17	6.1%	10	3.6%	1	0.4%	10	3.6%	6	2.5%	10	3.6%	270	54.2%	236	45.8%						
Homerton College	47	16.8%	29	12.3%	122	43.7%	148	62.7%	20	7.2%	10	4.2%	63	22.6%	42	17.8%	17	6.1%	10	3.6%	1	0.4%	10	3.6%	6	2.5%	10	3.6%	270	54.2%	236	45.8%						
Hughes Hall	14	24.6%	1	4.8%	27	47.4%	10	47.6%	1	1.8%	0	0.0%	11	19.3%	6	28.6%	3	5.3%	2	9.5%	1	1.8%	2	9.5%	2	9.5%	1	1.8%	57	73.1%	21	26.9%						
Jesus College	52.5	20.1%	37.5	20.2%	140.5	53.8%	104	55.9%	18	6.9%	16	8.6%	37	14.2%	22.5	12.1%	11	4.2%	5	2.7%	2	0.8%	1	0.5%	261	58.4%	186	41.6%										
Kings College	57	26.9%	32.5	19.8%	97	45.8%	98.5	60.1%	10	4.7%	11	6.7%	37	17.5%	17	10.4%	7	3.3%	2	1.2%	4	1.9%	3	1.8%	212	56.4%	164	43.6%										
Lucy Cavendish College	0	0.0%	0	0.0%	0	0.0%	30	38.0%	0	0.0%	3	3.8%	0	0.0%	24.5	31.0%	0	0.0%	7.5	9.5%	0	0.0%	5	6.3%	0	0.0%	5	6.3%	0	0.0%	79	100.0%						
Magdalene College	39.5	25.0%	38.5	23.5%	79.5	50.3%	84.5	51.5%	11	7.0%	18	11.0%	24	15.2%	19	11.6%	3	1.9%	2	1.2%	1	0.6%	2	1.2%	1	0.6%	2	1.2%	158	49.1%	164	50.9%						
New Hall	0	0.0%	44.5	14.1%	0	0.0%	176.5	56.0%	0	0.0%	36	11.4%	0	0.0%	49	15.6%	0	0.0%	8	2.5%	0	0.0%	1	0.3%	0	0.0%	1	0.3%	0	0.0%	315	100.0%						
Newnham College	0	0.0%	46.5	13.6%	0	0.0%	192.5	56.3%	0	0.0%	36	10.5%	0	0.0%	52	15.2%	0	0.0%	10	2.9%	0	0.0%	5	1.5%	0	0.0%	5	1.5%	0	0.0%	342	100.0%						
Pembroke College	66.5	31.8%	31.5	17.0%	83.5	40.0%	115.5	62.4%	16	7.7%	14	7.6%	35	16.7%	20	10.8%	6	2.9%	3	1.6%	2	1.0%	2	1.0%	209	53.0%	185	47.0%										
Peterhouse	45	34.6%	16.5	17.2%	52	40.0%	44.5	46.4%	11	8.5%	10	10.4%	12	9.2%	17	17.7%	5	3.8%	6	6.3%	5	3.8%	2	2.1%	130	57.5%	96	42.5%										
Queens' College	82	28.4%	28.5	14.8%	115	39.8%	113.5	59.1%	22	7.6%	13	6.8%	55	19.0%	29	15.1%	11	3.8%	8	4.2%	4	1.4%	0	0.0%	289	60.1%	192	39.9%										
Robinson College	43	19.1%	24	17.9%	109	48.4%	71.5	53.4%	23	10.2%	14	10.4%	41	18.2%	21.5	16.0%	7	3.1%	1	0.7%	2	0.9%	2	1.5%	225	62.7%	134	37.3%										
Selwyn College	53	29.6%	31.5	18.2%	87	48.6%	108.5	62.7%	12	6.7%	11	6.4%	23	12.8%	15	8.7%	1	0.6%	7	4.0%	3	1.7%	0	0.0%	179	50.9%	173	49.1%										
Sidney Sussex College	42	23.1%	26	17.8%	85	46.7%	86.5	59.2%	11	6.0%	12	8.2%	32	17.6%	21.5	14.7%	8	4.4%	0	0.0%	4	2.2%	0	0.0%	182	55.5%	146	44.5%										
St Catharine's College	56	25.8%	40.5	21.3%	114	52.5%	111	58.4%	13	6.0%	14	7.4%	27	12.4%	17.5	9.2%	5	2.3%	5	2.6%	2	0.9%	2	1.1%	217	53.3%	190	46.7%										
St Edmund's College	11	13.6%	1	2.3%	42	51.9%	18	41.9%	5	6.2%	6	14.0%	14	17.3%	10	23.3%	6	7.4%	6	14.0%	3	3.7%	2	4.7%	81	65.3%	43	34.7%										
St John's College	91.5	27.5%	24	11.9%	167	50.2%	119	58.9%	20	6.0%	22	10.9%	39.5	11.9%	32.5	16.1%	10	3.0%	4.5	2.2%	5	1.5%	0	0.0%	333	62.2%	202	37.8%										
Trinity College	178	41.3%	52.5	23.6%	180	41.8%	116.5	52.5%	21	4.9%	13	5.9%	38	8.8%	29	13.1%	11	2.6%	9	4.1%	3	0.7%	2	0.9%	431	66.0%	222	34.0%										
Trinity Hall	52	28.9%	39.5	23.7%	94	52.2%	99.5	59.6%	10	5.6%	14	8.4%	18	10.0%	12	7.2%	4	2.2%	4	2.2%	2	1.1%	2	1.2%	180	51.9%	167	48.1%										
Wolfson College	7	14.9%	1	5.6%	29	61.7%	10	55.6%	1	2.1%	1	5.6%	6	12.8%	5	27.8%	2	4.3%	0	0.0%	2	4.3%	1	5.6%	47	72.3%	18	27.7%										
<b>Totals</b>	<b>1,535</b>	<b>27.2%</b>	<b>822</b>	<b>17.3%</b>	<b>2,610</b>	<b>46.3%</b>	<b>2,751.5</b>	<b>57.8%</b>	<b>407</b>	<b>7.2%</b>	<b>392</b>	<b>8.2%</b>	<b>811.5</b>	<b>14.4%</b>	<b>630.5</b>	<b>13.2%</b>	<b>189.5</b>	<b>3.4%</b>	<b>122</b>	<b>2.6%</b>	<b>82</b>	<b>1.5%</b>	<b>43</b>	<b>0.9%</b>	<b>5,635</b>	<b>54.2%</b>	<b>4,761</b>	<b>45.8%</b>										



## Preliminary and other examination results by college, 2010

	Class I		Class II Division (1)		Class II Undivided		Class II Division (2)		Class III		Other results		Total candidates		
	No.	%	No.	%	No.	%	No.	%	No.	%	No.	%	No.	%	
Christ's College	0	0.0%	2	100.0%	0	0.0%	0	0.0%	0	0.0%	0	0.0%	0	0.0%	2
Churchill College	0	0.0%	1	100.0%	0	0.0%	0	0.0%	0	0.0%	0	0.0%	0	0.0%	1
Clare College	1	16.7%	3	50.0%	1	16.7%	1	16.7%	0	0.0%	0	0.0%	0	0.0%	6
Clare Hall	1	14.3%	6	85.7%	0	0.0%	0	0.0%	0	0.0%	0	0.0%	0	0.0%	7
Corpus Christi College	2	33.3%	4	66.7%	0	0.0%	0	0.0%	0	0.0%	0	0.0%	0	0.0%	6
Darwin College	1	6.7%	14	93.3%	0	0.0%	0	0.0%	0	0.0%	0	0.0%	0	0.0%	15
Downing College	2	33.3%	2	33.3%	2	33.3%	0	0.0%	0	0.0%	0	0.0%	0	0.0%	6
Emmanuel College	1	25.0%	3	75.0%	0	0.0%	0	0.0%	0	0.0%	0	0.0%	0	0.0%	4
Fitzwilliam College	3	27.3%	4	36.4%	2	18.2%	1	9.1%	1	9.1%	0	0.0%	0	0.0%	11
Girton College	1	20.0%	4	80.0%	0	0.0%	0	0.0%	0	0.0%	0	0.0%	0	0.0%	5
Gonville and Caius College	2	28.6%	4	57.1%	0	0.0%	0	0.0%	1	14.3%	0	0.0%	0	0.0%	7
Homerton College	1	20.0%	2	40.0%	1	20.0%	1	20.0%	0	0.0%	0	0.0%	0	0.0%	5
Hughes Hall	1	6.3%	14	87.5%	0	0.0%	0	0.0%	0	0.0%	1	6.3%	0	0.0%	16
Jesus College	8	80.0%	2	20.0%	0	0.0%	0	0.0%	0	0.0%	0	0.0%	0	0.0%	10
King's College	0	0.0%	0	0.0%	0	0.0%	0	0.0%	0	0.0%	0	0.0%	0	0.0%	0
Lucy Cavendish College	0	0.0%	5	50.0%	5	50.0%	0	0.0%	0	0.0%	0	0.0%	0	0.0%	10
Magdalene College	0	0.0%	4	80.0%	0	0.0%	0	0.0%	1	20.0%	0	0.0%	0	0.0%	5
New Hall	1	25.0%	3	75.0%	0	0.0%	0	0.0%	0	0.0%	0	0.0%	0	0.0%	4
Newnham College	2	20.0%	6	60.0%	0	0.0%	2	20.0%	0	0.0%	0	0.0%	0	0.0%	10
Pembroke College	0	0.0%	1	100.0%	0	0.0%	0	0.0%	0	0.0%	0	0.0%	0	0.0%	1
Peterhouse	0	0.0%	0	0.0%	0	0.0%	0	0.0%	0	0.0%	0	0.0%	0	0.0%	0
Queens' College	1	10.0%	8	80.0%	0	0.0%	0	0.0%	1	10.0%	0	0.0%	0	0.0%	10
Robinson College	1	14.3%	4	57.1%	1	14.3%	1	14.3%	0	0.0%	0	0.0%	0	0.0%	7
Selwyn College	2	50.0%	0	0.0%	1	25.0%	1	25.0%	0	0.0%	0	0.0%	0	0.0%	4
Sidney Sussex College	2	18.2%	8	72.7%	1	9.1%	0	0.0%	0	0.0%	0	0.0%	0	0.0%	11
St Catharine's College	1	20.0%	3	60.0%	0	0.0%	1	20.0%	0	0.0%	0	0.0%	0	0.0%	5
St Edmund's College	1	20.0%	2	40.0%	1	20.0%	1	20.0%	0	0.0%	0	0.0%	0	0.0%	5
St John's College	0	0.0%	3	100.0%	0	0.0%	0	0.0%	0	0.0%	0	0.0%	0	0.0%	3
Trinity College	2	0.0%	1	0.0%	0	0.0%	0	0.0%	0	0.0%	0	0.0%	0	0.0%	3
Trinity Hall	4	33.3%	7	58.3%	1	8.3%	0	0.0%	0	0.0%	0	0.0%	0	0.0%	12
Wolfson College	5	21.7%	13	56.5%	2	8.7%	3	13.0%	0	0.0%	0	0.0%	0	0.0%	23
<b>Totals</b>	<b>46</b>	<b>21.5%</b>	<b>133</b>	<b>62.1%</b>	<b>18</b>	<b>8.4%</b>	<b>15</b>	<b>7.0%</b>	<b>2</b>	<b>0.9%</b>	<b>0</b>	<b>0.0%</b>	<b>0</b>	<b>0.0%</b>	<b>214</b>

This table excludes unclassified preliminary examinations in Classics, Education, History, and the First Examination in Theology for Ministry.



## Men's and Women's Preliminary and other examination results by college, 2010

	Class I				Class II (1)				Class II (2)				Class III				Others				Total			
	Men		Women		Men		Women		Men		Women		Men		Women		Men		Women		Men		Women	
	No.	%	No.	%	No.	%	No.	%	No.	%	No.	%	No.	%	No.	%	No.	%	No.	%	No.	%	No.	%
Christ's College	0	0.0%	0	0.0%	1	100.0%	1	100.0%	0	0.0%	0	0.0%	0	0.0%	0	0.0%	0	0.0%	0	0.0%	1	50.0%	1	50.0%
Churchill College	0	0.0%	0	0.0%	0	100.0%	0	#DIV/0!	0	0.0%	0	#DIV/0!	0	0.0%	0	0.0%	0	0.0%	0	0.0%	1	100.0%	0	0.0%
Clare College	1	25.0%	0	0.0%	2	50.0%	1	50.0%	0	0.0%	1	25.0%	0	0.0%	0	0.0%	0	0.0%	0	0.0%	4	66.7%	2	33.3%
Clare Hall	0	0.0%	1	33.3%	4	100.0%	2	66.7%	0	0.0%	0	0.0%	0	0.0%	0	0.0%	0	0.0%	0	0.0%	4	57.1%	3	42.9%
Corpus Christi College	1	25.0%	1	50.0%	3	75.0%	1	50.0%	0	0.0%	0	0.0%	0	0.0%	0	0.0%	0	0.0%	0	0.0%	4	66.7%	2	33.3%
Darwin College	1	11.1%	0	0.0%	8	88.9%	6	100.0%	0	0.0%	0	0.0%	0	0.0%	0	0.0%	0	0.0%	0	0.0%	9	60.0%	6	40.0%
Downing College	1	25.0%	1	50.0%	1	25.0%	1	50.0%	2	50.0%	0	0.0%	0	0.0%	0	0.0%	0	0.0%	0	0.0%	4	66.7%	2	33.3%
Emmanuel College	1	33.3%	0	0.0%	2	66.7%	1	100.0%	0	0.0%	0	0.0%	0	0.0%	0	0.0%	0	0.0%	0	0.0%	3	75.0%	1	25.0%
Fitzwilliam College	3	37.5%	0	0.0%	3	37.5%	1	33.3%	2	25.0%	0	0.0%	1	33.3%	0	0.0%	1	33.3%	0	0.0%	8	72.7%	3	27.3%
Girton College	0	0.0%	1	33.3%	2	100.0%	2	66.7%	0	0.0%	0	0.0%	0	0.0%	0	0.0%	0	0.0%	0	0.0%	2	40.0%	3	60.0%
Gonville and Caius College	1	33.3%	1	25.0%	1	33.3%	3	75.0%	0	0.0%	0	0.0%	1	33.3%	0	0.0%	0	0.0%	0	0.0%	3	42.9%	4	57.1%
Homerton College	0	0.0%	1	33.3%	0	0.0%	2	66.7%	1	50.0%	0	0.0%	1	50.0%	0	0.0%	0	0.0%	0	0.0%	2	40.0%	3	60.0%
Hughes Hall	1	12.5%	0	0.0%	6	75.0%	8	100.0%	0	0.0%	0	0.0%	0	0.0%	0	0.0%	1	12.5%	0	0.0%	8	50.0%	8	50.0%
Jesus College	4	80.0%	4	80.0%	1	20.0%	1	20.0%	0	0.0%	0	0.0%	0	0.0%	0	0.0%	0	0.0%	0	0.0%	5	50.0%	5	50.0%
King's College	0	0.0%	0	0.0%	0	0.0%	0	0.0%	0	0.0%	0	0.0%	0	0.0%	0	0.0%	0	0.0%	0	0.0%	0	0.0%	0	0.0%
Lucy Cavendish College	0	0.0%	0	0.0%	0	0.0%	5	50.0%	0	0.0%	0	0.0%	0	0.0%	0	0.0%	0	0.0%	0	0.0%	0	0.0%	0	0.0%
Magdalene College	0	0.0%	0	0.0%	0	0.0%	4	80.0%	0	0.0%	0	0.0%	1	20.0%	0	0.0%	0	0.0%	0	0.0%	0	0.0%	0	0.0%
New Hall	0	0.0%	1	25.0%	0	0.0%	3	75.0%	0	0.0%	0	0.0%	0	0.0%	0	0.0%	0	0.0%	0	0.0%	0	0.0%	4	100.0%
Newnham College	0	0.0%	2	20.0%	0	0.0%	6	60.0%	0	0.0%	0	0.0%	2	20.0%	0	0.0%	0	0.0%	0	0.0%	0	0.0%	10	100.0%
Pembroke College	0	0.0%	0	0.0%	0	0.0%	1	100.0%	0	0.0%	0	0.0%	0	0.0%	0	0.0%	0	0.0%	0	0.0%	0	0.0%	1	100.0%
Peterhouse	0	0.0%	0	0.0%	0	0.0%	0	0.0%	0	0.0%	0	0.0%	0	0.0%	0	0.0%	0	0.0%	0	0.0%	0	0.0%	0	0.0%
Queens' College	1	25.0%	0	0.0%	3	75.0%	5	83.3%	0	0.0%	0	0.0%	1	16.7%	0	0.0%	0	0.0%	0	0.0%	4	40.0%	6	60.0%
Robinson College	1	20.0%	0	0.0%	2	40.0%	2	100.0%	1	20.0%	0	0.0%	0	0.0%	0	0.0%	0	0.0%	0	0.0%	5	71.4%	2	28.6%
Selwyn College	2	100.0%	0	0.0%	0	0.0%	0	0.0%	0	0.0%	1	50.0%	0	0.0%	0	0.0%	0	0.0%	0	0.0%	2	50.0%	2	50.0%
Sidney Sussex College	2	28.6%	0	0.0%	5	71.4%	3	75.0%	0	0.0%	1	25.0%	0	0.0%	0	0.0%	0	0.0%	0	0.0%	7	63.6%	4	36.4%
St Catharine's College	1	33.3%	0	0.0%	1	33.3%	2	100.0%	0	0.0%	1	33.3%	0	0.0%	0	0.0%	0	0.0%	0	0.0%	3	60.0%	2	40.0%
St Edmund's College	1	33.3%	0	0.0%	1	33.3%	1	50.0%	0	0.0%	0	0.0%	1	50.0%	0	0.0%	0	0.0%	0	0.0%	3	60.0%	2	40.0%
St John's College	0	0.0%	0	0.0%	1	100.0%	2	100.0%	0	0.0%	0	0.0%	0	0.0%	0	0.0%	0	0.0%	0	0.0%	1	33.3%	2	66.7%
Trinity College	0	0.0%	2	100.0%	1	100.0%	0	0.0%	0	0.0%	0	0.0%	0	0.0%	0	0.0%	0	0.0%	0	0.0%	1	33.3%	2	66.7%
Trinity Hall	0	0.0%	4	57.1%	4	80.0%	3	42.9%	1	20.0%	0	0.0%	0	0.0%	0	0.0%	0	0.0%	0	0.0%	5	41.7%	7	58.3%
Wolfson College	2	16.7%	3	27.3%	7	58.3%	6	54.5%	2	16.7%	0	0.0%	1	8.3%	2	18.2%	0	0.0%	0	0.0%	12	52.2%	11	47.8%
<b>Totals</b>	<b>24</b>	<b>23.8%</b>	<b>22</b>	<b>19.5%</b>	<b>60</b>	<b>59.4%</b>	<b>73</b>	<b>64.6%</b>	<b>10</b>	<b>9.9%</b>	<b>8</b>	<b>7.1%</b>	<b>6</b>	<b>5.9%</b>	<b>9</b>	<b>8.0%</b>	<b>1</b>	<b>1.0%</b>	<b>1</b>	<b>0.9%</b>	<b>0</b>	<b>0.0%</b>	<b>101</b>	<b>47.2%</b>

This table excludes unclassified preliminary examinations in Classics, Education, History, and the First Examination in Theology for Ministry.





## Results in all examinations by college, 2010

	Class I		Class II Division (1)		Class II Undivided		Class II Division (2)		Class III		Other results		Total candidates	
	No.	%	No.	%	No.	%	No.	%	No.	%	No.	%	No.	No.
Christ's College	87	22.7%	209	54.6%	28	7.3%	43	11.2%	10	2.6%	6	1.6%	383	
Churchill College	138.5	30.4%	216	47.4%	36	7.9%	48.5	10.6%	13	2.9%	4	0.9%	456	
Clare College	100	23.7%	222.5	52.7%	43	10.2%	43.5	10.3%	8	1.9%	5	1.2%	422	
Clare Hall	1	11.1%	7	77.8%	0	0.0%	0	0.0%	0	0.0%	1	11.1%	9	
Corpus Christi College	54	22.5%	139	57.9%	17	7.1%	23	9.6%	7	2.9%	0	0.0%	240	
Darwin College	1	6.3%	15	93.8%	0	0.0%	0	0.0%	0	0.0%	0	0.0%	16	
Downing College	75.5	19.9%	200.5	52.9%	41	10.8%	46	12.1%	15	4.0%	1	0.3%	379	
Emmanuel College	148.5	33.8%	210.5	47.9%	29	6.6%	45	10.3%	3	0.7%	3	0.7%	439	
Fitzwilliam College	74.5	17.2%	217.5	50.3%	39	9.0%	80	18.5%	16	3.7%	5	1.2%	432	
Girton College	81	17.2%	257.5	54.8%	36	7.7%	72	15.3%	17.5	3.7%	6	1.3%	470	
Gonville and Caius College	118	24.8%	232.5	48.9%	36	7.6%	69.5	14.6%	14	2.9%	5	1.1%	475	
Homerton College	77	14.8%	272	52.3%	31	6.0%	106	20.4%	23	4.4%	11	2.1%	520	
Hughes Hall	16	17.0%	51	54.3%	1	1.1%	17	18.1%	6	6.4%	3	3.2%	94	
Jesus College	98	21.4%	246.5	53.9%	34	7.4%	59.5	13.0%	16	3.5%	3	0.7%	457	
King's College	89.5	23.8%	195.5	52.0%	21	5.6%	54	14.4%	9	2.4%	7	1.9%	376	
Lucy Cavendish College	9	10.1%	35	39.3%	8	9.0%	24.5	27.5%	7.5	8.4%	5	5.6%	89	
Magdalene College	78	23.9%	168	51.4%	29	8.9%	44	13.5%	5	1.5%	3	0.9%	327	
New Hall	45.5	14.3%	179.5	56.3%	36	11.3%	49	15.4%	8	2.5%	1	0.3%	319	
Newnham College	48.5	13.8%	198.5	56.4%	36	10.2%	54	15.3%	10	2.8%	5	1.4%	352	
Pembroke College	98	24.8%	200	50.6%	30	7.6%	55	13.9%	9	2.3%	3	0.8%	395	
Peterhouse	61.5	27.2%	96.5	42.7%	21	9.3%	29	12.8%	11	4.9%	7	3.1%	226	
Queens' College	111.5	22.7%	236.5	48.2%	35	7.1%	85	17.3%	19	3.9%	4	0.8%	491	
Robinson College	68	18.6%	184.5	50.4%	38	10.4%	63.5	17.3%	8	2.2%	4	1.1%	366	
Selwyn College	86.5	24.3%	195.5	54.9%	24	6.7%	39	11.0%	8	2.2%	3	0.8%	356	
Sidney Sussex College	70	20.6%	179.5	52.9%	24	7.1%	53.5	15.8%	8	2.4%	4	1.2%	339	
St Catharine's College	97.5	23.7%	228	55.3%	27	6.6%	45.5	11.0%	10	2.4%	4	1.0%	412	
St Edmund's College	13	10.1%	62	48.1%	12	9.3%	25	19.4%	12	9.3%	5	3.9%	129	
St John's College	115.5	21.5%	289	53.7%	42	7.8%	72	13.4%	14.5	2.7%	5	0.9%	538	
Trinity College	232.5	35.4%	297.5	45.4%	34	5.2%	67	10.2%	20	3.0%	5	0.8%	656	
Trinity Hall	95.5	26.6%	200.5	55.8%	25	7.0%	30	8.4%	4	1.1%	4	1.1%	359	
Wolfson College	13	14.8%	52	59.1%	4	4.5%	14	15.9%	2	2.3%	3	3.4%	88	
<b>Totals</b>	<b>2,403</b>	<b>22.6%</b>	<b>5,494.5</b>	<b>51.8%</b>	<b>817</b>	<b>7.7%</b>	<b>1,457</b>	<b>13.7%</b>	<b>313.5</b>	<b>3.0%</b>	<b>125</b>	<b>1.2%</b>	<b>10,610</b>	

This table excludes unclassified Preliminary examinations in Classics, Education, History, and the First Examination in Theology for Ministry and the Final M.B. and Final Vet. M.B. examinations.



## Men's and Women's results in all examinations by college, 2010

	Class I						Class II (1)						Class II (2)						Class III						Others						Total					
	Men			Women			Men			Women			Men			Women			Men			Women			Men			Women			Men			Women		
	No.	%	%	No.	%	%	No.	%	%	No.	%	%	No.	%	%	No.	%	%	No.	%	%	No.	%	%	No.	%	%	No.	%	%	No.	%	%	No.	%	%
Christ's College	63	27.5%	21	15.6%	115	50.2%	94	61.0%	15	6.6%	13	8.4%	28	12.2%	15	9.7%	3	1.3%	7	4.5%	5	2.2%	5	2.2%	5	2.2%	1	0.6%	229	59.8%	154	40.2%				
Churchill College	100.5	33.1%	38	25.0%	133.5	43.9%	82.5	54.3%	22	7.2%	14	9.2%	35	11.5%	13.5	8.9%	4	3.0%	4	2.6%	4	1.7%	4	1.7%	4	1.7%	0	0.0%	304	66.7%	152	33.3%				
Clare College	63.5	27.3%	36.5	19.3%	107.5	46.1%	115	60.8%	24	10.3%	19	10.1%	28	12.0%	15.5	8.2%	7	3.0%	1	0.5%	3	1.3%	3	1.3%	3	1.3%	2	1.1%	233	55.2%	189	44.8%				
Clare Hall	0	0.0%	1	33.3%	5	83.3%	2	66.7%	0	0.0%	0	0.0%	0	0.0%	0	0.0%	0	0.0%	0	0.0%	0	0.0%	0	0.0%	0	0.0%	1	16.7%	6	66.7%	3	33.3%				
Corpus Christi College	33	23.6%	21	21.0%	78	55.7%	61	61.0%	11	7.9%	6	6.0%	13	9.3%	10	10.0%	5	3.6%	2	2.0%	0	0.0%	0	0.0%	0	0.0%	0	0.0%	140	58.3%	100	41.7%				
Darwin College	1	11.1%	0	0.0%	8	88.9%	7	100.0%	0	0.0%	0	0.0%	0	0.0%	0	0.0%	0	0.0%	0	0.0%	0	0.0%	0	0.0%	0	0.0%	0	0.0%	9	56.3%	7	43.8%				
Downing College	54	24.9%	21.5	13.3%	97	44.7%	103.5	63.9%	23	10.6%	18	11.1%	30	13.8%	16	9.9%	13	6.0%	2	1.2%	0	0.0%	0	0.0%	0	0.0%	0	0.0%	217	57.3%	162	42.7%				
Emmanuel College	95	37.4%	53.5	28.9%	104	40.9%	106.5	57.6%	24	9.4%	5	2.7%	27	10.6%	18	9.7%	20	9.7%	2	0.8%	2	0.8%	2	0.8%	2	0.8%	1	0.5%	254	57.9%	185	42.1%				
Fitzwilliam College	59	21.5%	15.5	9.9%	121	44.0%	96.5	61.5%	24	8.7%	15	9.6%	25	15.9%	12	4.4%	4	2.5%	12	4.4%	4	1.5%	4	1.5%	4	1.5%	1	0.6%	275	63.7%	157	36.3%				
Girton College	56	20.9%	25	12.4%	132	49.3%	125.5	62.1%	19	7.1%	17	8.4%	46.5	17.4%	25.5	12.6%	10.5	3.9%	7	3.5%	4	1.5%	4	1.5%	4	1.5%	2	1.0%	268	57.0%	202	43.0%				
Gonville and Caius College	82	30.0%	36	17.8%	113.5	41.6%	119	58.9%	24	8.8%	12	5.9%	38.5	14.1%	31	15.3%	11	4.0%	3	1.5%	4	1.5%	4	1.5%	4	1.5%	1	0.5%	273	57.5%	202	42.5%				
Homerton College	47	16.7%	30	12.6%	122	43.4%	150	62.8%	21	7.5%	10	4.2%	64	22.8%	42	17.6%	17	6.0%	6	2.5%	10	3.6%	10	3.6%	10	3.6%	1	0.4%	281	54.0%	239	46.0%				
Hughes Hall	15	23.1%	1	3.4%	33	50.8%	18	62.1%	1	1.5%	0	0.0%	11	16.9%	6	20.7%	4	6.2%	2	6.9%	1	1.5%	2	6.9%	1	1.5%	2	6.9%	65	69.1%	29	30.9%				
Jesus College	56.5	21.2%	41.5	21.7%	141.5	53.2%	105	55.0%	18	6.8%	16	8.4%	37	13.9%	22.5	11.8%	11	4.1%	5	2.6%	2	0.8%	2	0.8%	2	0.8%	1	0.5%	266	58.2%	191	41.8%				
King's College	57	26.9%	32.5	19.8%	97	45.8%	98.5	60.1%	10	4.7%	11	6.7%	37	17.5%	17	10.4%	7	3.3%	2	1.2%	4	1.9%	4	1.9%	4	1.9%	3	1.8%	212	56.4%	164	43.6%				
Lucy Cavendish College	0	0.0%	9	10.1%	0	0.0%	35	39.3%	0	0.0%	8	9.0%	0	0.0%	24.5	27.5%	0	0.0%	7.5	8.4%	0	0.0%	0	0.0%	5	5.6%	0	0.0%	0	0.0%	89	100.0%				
Magdalene College	39.5	25.0%	38.5	22.8%	79.5	50.3%	88.5	52.4%	11	7.0%	18	10.7%	24	15.2%	20	11.8%	3	1.9%	2	1.2%	2	1.2%	2	1.2%	2	1.2%	1	0.6%	158	48.3%	169	51.7%				
New Hall	0	0.0%	45.5	14.3%	0	0.0%	179.5	56.3%	0	0.0%	36	11.3%	0	0.0%	49	15.4%	0	0.0%	8	2.5%	0	0.0%	0	0.0%	0	0.0%	0	0.0%	0	0.0%	0	0.0%	319	100.0%		
Newnham College	0	0.0%	48.5	13.8%	0	0.0%	198.5	56.4%	0	0.0%	36	10.2%	0	0.0%	54	15.3%	0	0.0%	10	2.8%	0	0.0%	0	0.0%	0	0.0%	5	1.4%	0	0.0%	352	100.0%				
Pembroke College	66.5	31.8%	31.5	16.9%	83.5	40.0%	116.5	62.6%	16	7.7%	14	7.5%	35	16.7%	20	10.8%	6	2.9%	3	1.6%	2	1.0%	2	1.0%	2	1.0%	1	0.5%	209	52.9%	186	47.1%				
Peterhouse	45	34.6%	16.5	17.2%	52	40.0%	44.5	46.4%	11	8.5%	10	10.4%	12	9.2%	17	17.7%	5	3.8%	6	6.3%	5	3.8%	5	3.8%	2	2.1%	130	57.5%	96	42.5%						
Queens' College	83	28.3%	28.5	14.4%	118	40.3%	118.5	59.8%	22	7.5%	13	6.6%	55	18.8%	30	15.2%	11	3.8%	8	4.0%	4	1.4%	4	1.4%	4	1.4%	0	0.0%	293	59.7%	198	40.3%				
Robinson College	44	19.1%	24	17.6%	111	48.3%	73.5	54.0%	24	10.4%	14	10.3%	42	18.3%	21.5	15.8%	7	3.0%	1	0.7%	2	0.9%	2	0.9%	2	0.9%	2	1.5%	230	62.8%	136	37.2%				
Selwyn College	55	30.4%	31.5	18.0%	87	48.1%	108.5	62.0%	12	6.6%	12	6.9%	23	12.7%	16	9.1%	1	0.6%	7	4.0%	3	1.7%	3	1.7%	3	1.7%	0	0.0%	181	50.8%	175	49.2%				
Sidney Sussex College	44	23.3%	26	17.3%	90	47.6%	89.5	59.7%	11	5.8%	13	8.7%	32	16.9%	21.5	14.3%	8	4.2%	0	0.0%	4	2.1%	4	2.1%	4	2.1%	0	0.0%	189	55.8%	150	44.2%				
St Catharine's College	57	25.9%	40.5	21.1%	115	52.3%	113	58.9%	13	5.9%	14	7.3%	28	12.7%	17.5	9.1%	5	2.3%	5	2.6%	2	0.9%	2	0.9%	2	1.0%	220	53.4%	192	46.6%						
St Edmund's College	12	14.3%	1	2.2%	43	51.2%	19	42.2%	6	7.1%	6	13.3%	14	16.7%	11	24.4%	6	7.1%	6	13.3%	3	3.6%	3	3.6%	3	3.6%	2	4.4%	84	65.1%	45	34.9%				
St John's College	91.5	27.4%	24	11.8%	168	50.3%	121	59.3%	20	6.0%	22	10.8%	39.5	11.8%	32.5	15.9%	10	3.0%	4.5	2.2%	5	1.5%	5	1.5%	0	0.0%	334	62.1%	204	37.9%						
Trinity College	178	41.2%	54.5	24.3%	181	41.9%	116.5	52.0%	21	4.9%	13	5.8%	38	8.8%	29	12.9%	11	2.5%	9	4.0%	3	0.7%	3	0.7%	2	0.9%	432	65.9%	224	34.1%						
Trinity Hall	52	28.1%	43.5	25.0%	98	53.0%	102.5	58.9%	11	5.9%	14	8.0%	18	9.7%	12	6.9%	4	2.2%	0	0.0%	4	2.1%	4	2.1%	2	1.1%	185	51.5%	174	48.5%						
Wolfson College	9	15.3%	4	13.8%	36	61.0%	16	55.2%	3	5.1%	1	3.4%	7	11.9%	7	24.1%	2	3.4%	0	0.0%	2	3.4%	2	3.4%	1	3.4%	59	67.0%	29	33.0%						
<b>Totals</b>	<b>1,559</b>	<b>27.2%</b>	<b>844</b>	<b>17.3%</b>	<b>2,670</b>	<b>46.5%</b>	<b>2,824.5</b>	<b>58.0%</b>	<b>417</b>	<b>7.3%</b>	<b>400</b>	<b>8.2%</b>	<b>817.5</b>	<b>14.3%</b>	<b>639.5</b>	<b>13.1%</b>	<b>190.5</b>	<b>3.3%</b>	<b>123</b>	<b>2.5%</b>	<b>82</b>	<b>1.4%</b>	<b>43</b>	<b>0.9%</b>	<b>5,736.0</b>	<b>54.1%</b>	<b>4,874</b>	<b>45.9%</b>								

This table excludes unclassified Preliminary examinations in Classics, Education, History, and the First Examination in Theology for Ministry and the Final M.B. and Final Vet. M.B. examinations.



## Unclassified preliminary and other examinations 2010

Key A = Classified  
 B = Insufficient papers to be classified  
 C = Not classified

	Classics II			Education I			Education II			History I			Theology for Ministry I				
	A	B	C	A	B	C	A	B	C	A	B	C	A	B	C		
Christ's College	0	0	0	0	0	0	0	0	0	0	0	0	0	1	0	0	
Churchill College	0	0	0	0	0	0	0	0	0	0	0	0	7	0	0	0	
Clare College	0	0	0	0	0	0	0	0	0	0	0	0	8	0	0	0	
Corpus Christi College	0	0	0	0	0	0	0	0	0	0	0	0	6	0	0	0	
Downing College	0	0	0	0	0	0	0	0	0	0	0	0	5	0	0	0	
Emmanuel College	0	0	0	0	0	0	0	0	0	0	0	0	7	0	0	0	
Fitzwilliam College	0	0	0	0	0	0	0	0	0	0	0	0	7	0	0	0	
Girton College	1	0	0	0	0	0	0	0	0	0	0	0	7	0	0	0	
Gonville and Caius College	0	0	0	0	0	0	2	0	0	0	0	0	0	0	0	0	
Homerton College	0	0	0	31	0	0	0	0	0	0	0	0	11	0	0	0	
Hughes Hall	0	0	0	1	0	0	0	0	0	0	0	0	2	0	0	0	
Jesus College	1	0	0	1	0	0	1	0	0	0	0	0	8	0	0	0	
King's College	1	0	0	0	0	0	0	0	0	0	0	0	9	0	0	0	
Lucy Cavendish College	0	0	0	0	0	0	0	0	0	0	0	0	1	0	0	0	
Magdalene College	0	0	0	0	0	0	0	0	0	0	0	0	7	0	0	0	
New Hall	0	0	0	0	0	0	0	0	0	0	0	0	8	0	0	0	
Newnham College	0	0	0	0	0	0	0	0	0	0	0	0	5	0	0	0	
Pembroke College	0	0	0	0	0	0	0	0	0	0	0	0	10	0	0	0	
Peterhouse	0	0	0	0	0	0	0	0	0	0	0	0	6	5	0	0	
Queens' College	0	0	0	0	0	0	0	0	0	0	0	0	9	0	0	0	
Robinson College	0	0	0	0	0	0	0	0	0	0	0	0	6	1	0	0	
Selwyn College	0	0	0	1	0	0	0	0	0	0	0	0	9	1	0	0	
Sidney Sussex College	0	0	0	0	0	0	0	0	0	0	0	0	7	0	0	0	
St Catharine's College	1	0	0	0	0	0	0	0	0	0	0	0	6	0	0	0	
St Edmund's College	0	0	0	0	0	0	0	0	0	0	0	0	1	0	0	0	
St John's College	0	0	0	0	0	0	0	0	0	0	0	0	8	0	0	0	
Trinity College	0	0	0	0	0	0	0	0	0	0	0	0	9	0	0	0	
Trinity Hall	0	0	0	0	0	0	0	0	0	0	0	0	7	0	0	0	
Wolfson College	0	0	0	0	0	0	0	0	0	0	0	0	1	0	0	0	
<b>Totals</b>	<b>4</b>	<b>0</b>	<b>0</b>	<b>34</b>	<b>0</b>	<b>0</b>	<b>0</b>	<b>3</b>	<b>0</b>	<b>0</b>	<b>0</b>	<b>0</b>	<b>177</b>	<b>19</b>	<b>1</b>	<b>27</b>	<b>0</b>

